



PARTS CATALOGUE

AL115FX (1KP1) INDONESIA



1L1KP-460E1

()

AL115FX
PARTS CATALOGUE
©2012 by Yamaha Motor Co., Ltd.
1st edition, March 2012
All rights reserved.
Any reprinting or unauthorized use
without the written permission of
Yamaha Motor Co., Ltd.
is expressly prohibited.
Printed in Japan.

FOREWORD

This Parts Catalogue is related to the parts for the model(s) on the cover page. When you are ordering replacement parts, please refer to this Parts Catalogue and quote both part numbers and part names correctly.

1. Modifications or additions which have been made after the issue of the Parts Catalogue will be announced in the Parts News.
It is advisable that you make the necessary corrections to the Parts Catalogue according to the Parts News.

2. Abbreviations

The following abbreviations are used in this Parts Catalogue.

“UR” Use specified parts number.

“UN” Use as many as needed.

“AP” Alternate Parts

“LM” Locally Made (Parts need to be ordered locally)

“F#” Frame No. (Applicable machine No.)

“O/S” Over Size

3. The number of components for assembly

- Parts, which are to be supplied in an assembly, are listed with a dot (.) in front of the part name as shown below.
- The numeral appearing to the right of each component part indicates the quantity of parts for each assembly unit.

PART NO.	DESCRIPTION	Q'TY	REMARKS
2F5-83310-60	FRONT FLASHER LIGHT ASSY	2	
115-83311-60	.BULB (6V-18W)	1	

4. Applicable colours of graphics are represented in the “REMARKS” as shown below.

PART NO.	DESCRIPTION	Q'TY	REMARKS
2N4-24110-00-X5	FUEL TANK COMP.	2	MXR
3J1-24240-10	.GRAPHIC, FUEL TANK	1	FOR MXR

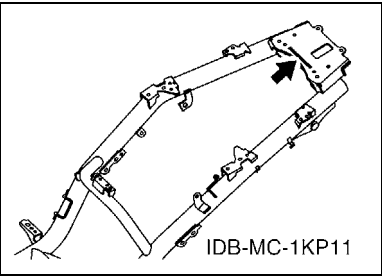
5. Note that the illustrations for reference in finding parts numbers are not to be used for assembling. When assembling, please use the applicable service manual.

6. The asterisk (*) before a reference number indicates modified items after the first edition.

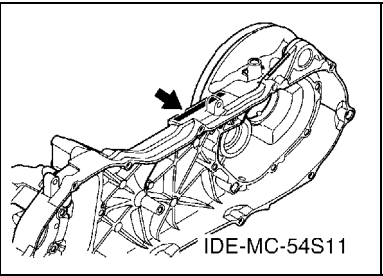
FOREWORD

7. Applicable Serial No.

Frame Serial No.



Engine Serial No.



8. Applicable Colour Code (The (*) mark shows Model colour.)

Abbreviation	Colour Name	Colour Code
BIB2	BLUISH BLACK 2	007B
BMC(*)	BLUE METALLIC C	0775
DPRMD(*)	DEEP PURPLISH RED METALLIC D	1294
DRYM2(*)	DULL REDDISH YELLOW METALLIC 2	1295
LGM6(*)	LEAF GREEN METALLIC 6	0946
RM7(*)	RED METALLIC 7	1218
RSM2(*)	REDDISH BLACK METALLIC 2	1159
WM6(*)	WHITE METALLIC 6	1124
YB	YAMAHA BLACK	0033

9. Applicable Starting Serial No.

Frame Serial No.

Serial No.	Name Of Q'ty Column	Model Code

Engine Serial No.

Serial No.	Name Of Q'ty Column	Model Code

CONTENTS

ENGINE

CYLINDER	1
CRANKSHAFT & PISTON	2
VALVE	3
CAMSHAFT & CHAIN	4
OIL PUMP	5
AIR SHROUD & FAN	6
INTAKE	7
EXHAUST	9
CRANKCASE	10
CRANKCASE COVER 1	12
STARTER	13
CLUTCH	14
TRANSMISSION	16

CHASSIS

FRAME	17
FENDER	18
SIDE COVER	19
REAR ARM & SUSPENSION	23
STEERING	24
FUEL TANK	26
SEAT	27
FRONT WHEEL	29
FRONT BRAKE CALIPER	30
REAR WHEEL	31
STEERING HANDLE & CABLE	32
FRONT MASTER CYLINDER	34
STAND & FOOTREST	35
LEG SHIELD	37
GENERATOR	39
STARTING MOTOR	40
METER	41
HEADLIGHT	42
TAILLIGHT	43
HANDLE SWITCH & LEVER	44
ELECTRICAL 1	45
ELECTRICAL 2	46

INDEX

NUMERICAL INDEX	47
-----------------------	----

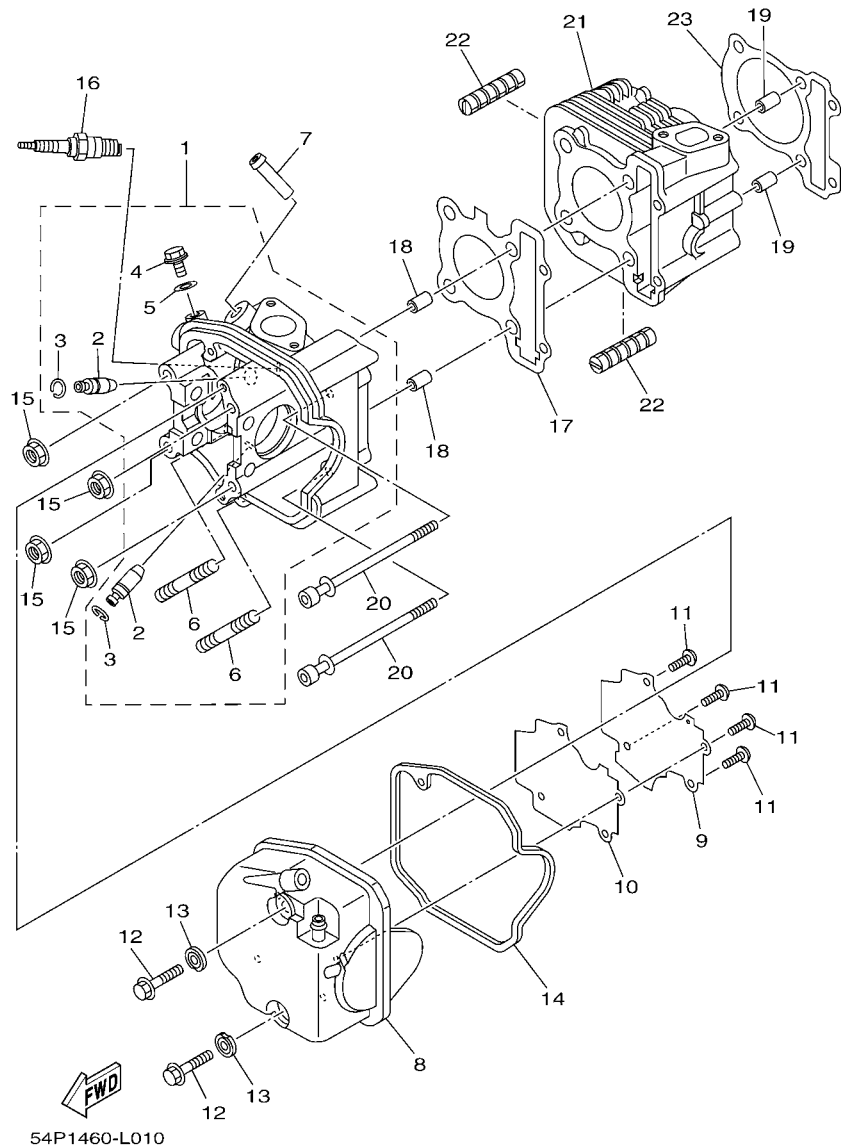


FIG. 1 CYLINDER

REF. NO.	PART NO.	DESCRIPTION	1KP1				REMARKS
1	54P-E1102-00	CYLINDER HEAD ASSY	1				
2	54P-E1133-10	.GUIDE, VALVE 1	2				
3	93440-10085	.CIRCLIP	2				
4	95022-06010	.BOLT, FLANGE	1				
5	90430-06014	.GASKET	1				
6	95612-08618	.BOLT, STUD	2				
7	54P-E111J-00	PIPE 1	1				
8	54P-E1191-00	COVER, CYLINDER HEAD 1	1				
9	54P-E1165-00	PLATE, BREATHER	1				
10	54P-E1169-00	GASKET, BREATHER COVER	1				
11	90149-05801	SCREW	4				
12	95812-06030	BOLT, FLANGE	2				
13	54P-E1173-00	WASHER, SEALING	2				
14	54P-E1193-00	GASKET, HEAD COVER 1	1				
15	90179-08518	NUT	4				
16	94700-00880	PLUG, SPARK (NGK CR6HSA)	1				UR
	94700-00895	PLUG, SPARK (ND U20FSR-U)	1				UR
17	54P-E1181-00	GASKET, CYLINDER HEAD 1	1				
18	91810-14809	PIN, DOWEL	2				
19	91810-14809	PIN, DOWEL	2				
20	90110-06862	BOLT, HEXAGON SOCKET HEAD	2				
21	54P-E1311-00	CYLINDER 1	1				
22	54P-E1162-00	ABSORBER 2	2				
23	54P-E1351-00	GASKET, CYLINDER	1				

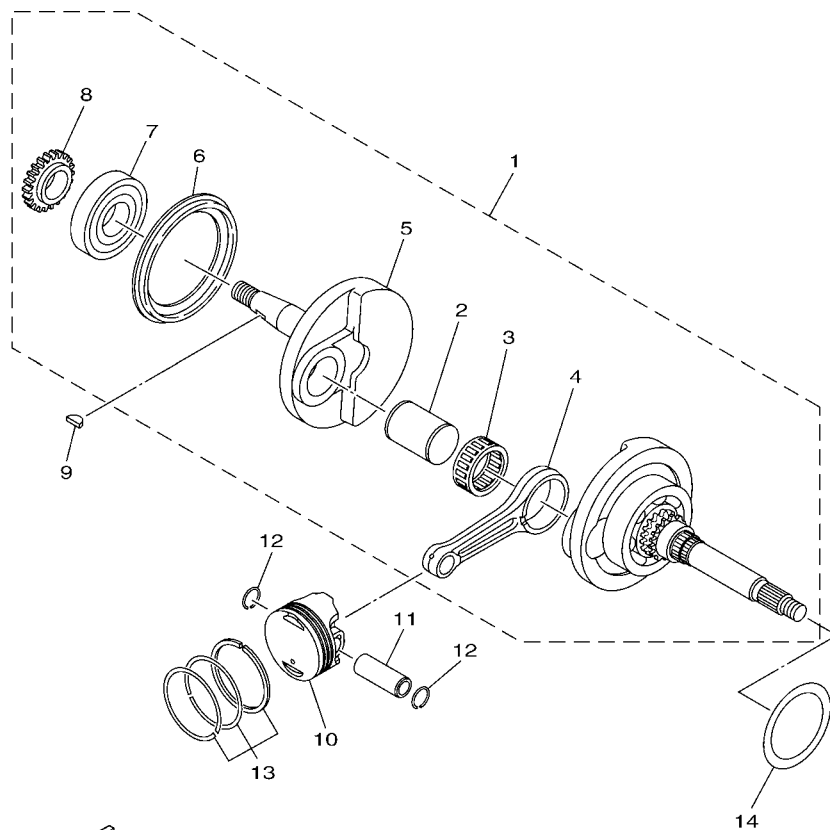


FIG. 2 CRANKSHAFT & PISTON

REF. NO.	PART NO.	DESCRIPTION	1KP1				REMARKS
1	1KP-E1400-00	CRANKSHAFT ASSY	1				
2	5MX-E1681-10	.PIN, CRANK 1	1				
3	93310-528Y8	.BEARING	1				
4	5D9-E1651-00	.ROD, CONNECTING	1				
5	1KP-E1422-00	.CRANK 2	1				
6	5LW-E3452-00	.COVER, ROTOR FILTER	1				
7	93306-372Y5	.BEARING	1				
8	5TL-E3324-00	.GEAR, PUMP DRIVE	1				
9	90280-03017	KEY, WOODRUFF	1				
10	54P-E1631-00	PISTON (STD)	1				
11	54P-E1633-00	PIN, PISTON	1				
12	93450-14088	CIRCLIP	2				
13	54P-E1603-00	PISTON RING SET (STD)	1				
14	54P-E1445-00	SPACER	1				



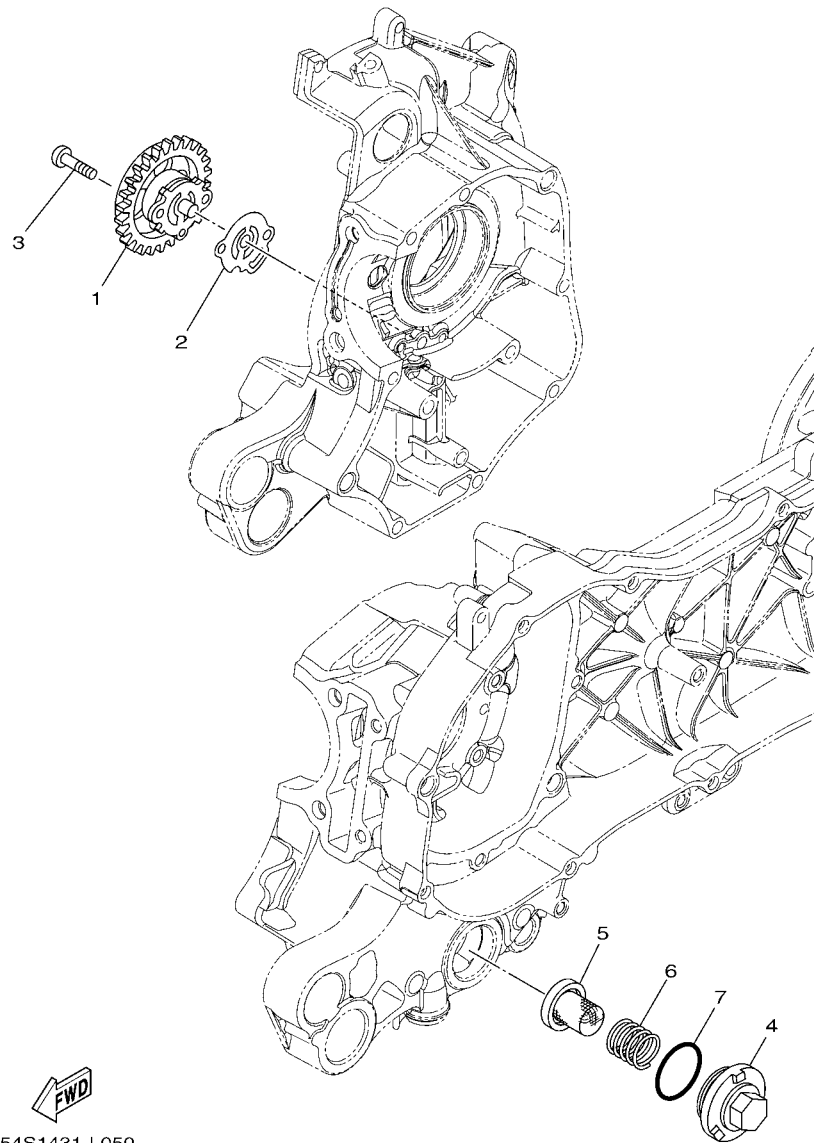


FIG. 5 OIL PUMP

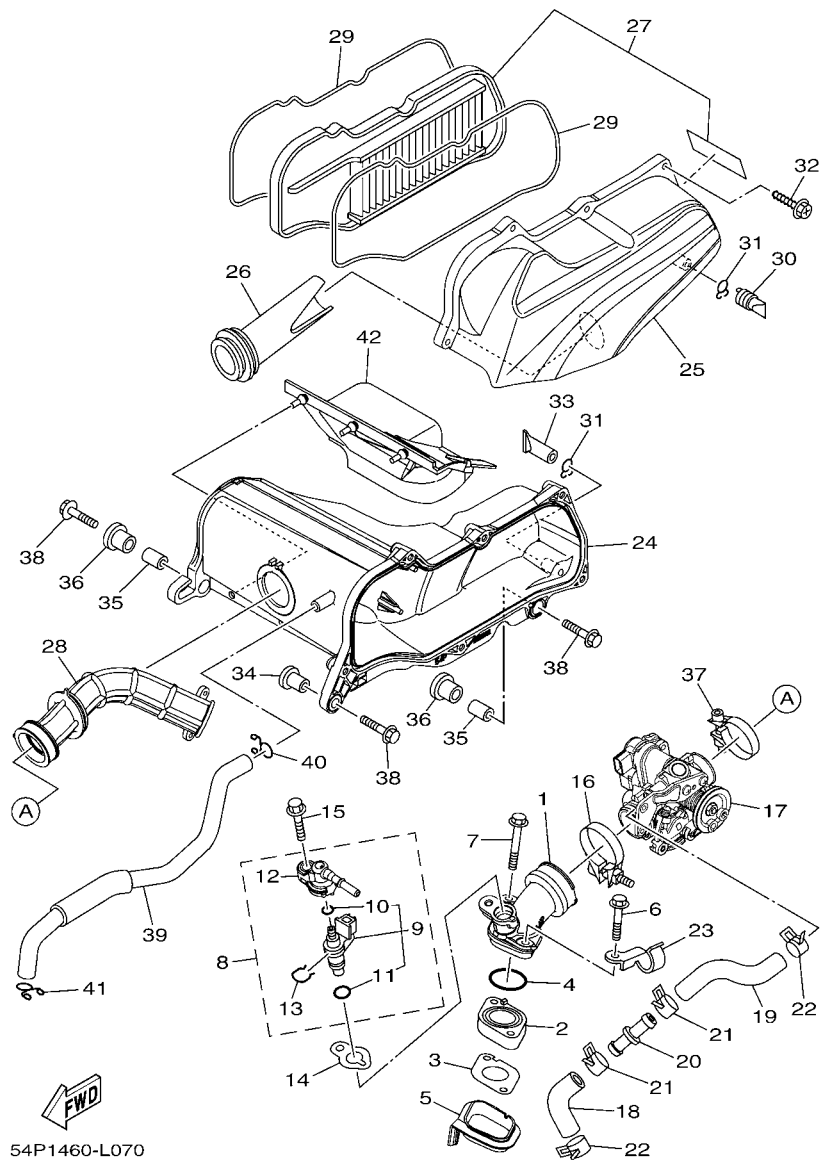


FIG. 7 INTAKE

REF. NO.	PART NO.	DESCRIPTION	1KP1				REMARKS
1	54P-E3585-00	MANIFOLD	1				
2	54P-E3595-00	JOINT	1				
3	54P-E3556-00	GASKET, MANIFOLD	1				
4	93210-30611	O-RING	1				
5	54P-E3593-00	DAMPER	1				
6	90105-068A5	BOLT, FLANGE	1				
7	90105-068A6	BOLT, FLANGE	1				
8	54P-E3770-00	INJECTOR ASSY	1				
9	54P-E3761-00	INJECTOR	1				
10	54P-E4147-00	O-RING	1				
11	5CA-E4147-00	O-RING	1				
12	54P-E3938-00	PIPE	1				
13	54P-E4137-00	CLIP	1				
14	54P-E3557-00	GASKET	1				
15	95812-06025	BOLT, FLANGE	1				
16	54P-E3474-00	BAND	1				
17	54P-E3750-01	THROTTLE BODY ASSY	1				
18	54P-E3892-00	HOSE, AIR 2	1				
19	54P-E3895-00	HOSE, AIR	1				
20	54P-E3815-00	JOINT 1	1				
21	90467-15804	CLIP	2				
22	90467-15804	CLIP	2				
23	54P-E4146-00	PLATE	1				
24	54P-E4411-00	CASE, AIR CLEANER 1	1				
25	54P-E4412-00	CAP, CLEANER CASE 1	1				
26	54P-E4437-00	DUCT	1				
27	54P-WE445-00	AIR CLEANER ELEMENT ASSY	1				

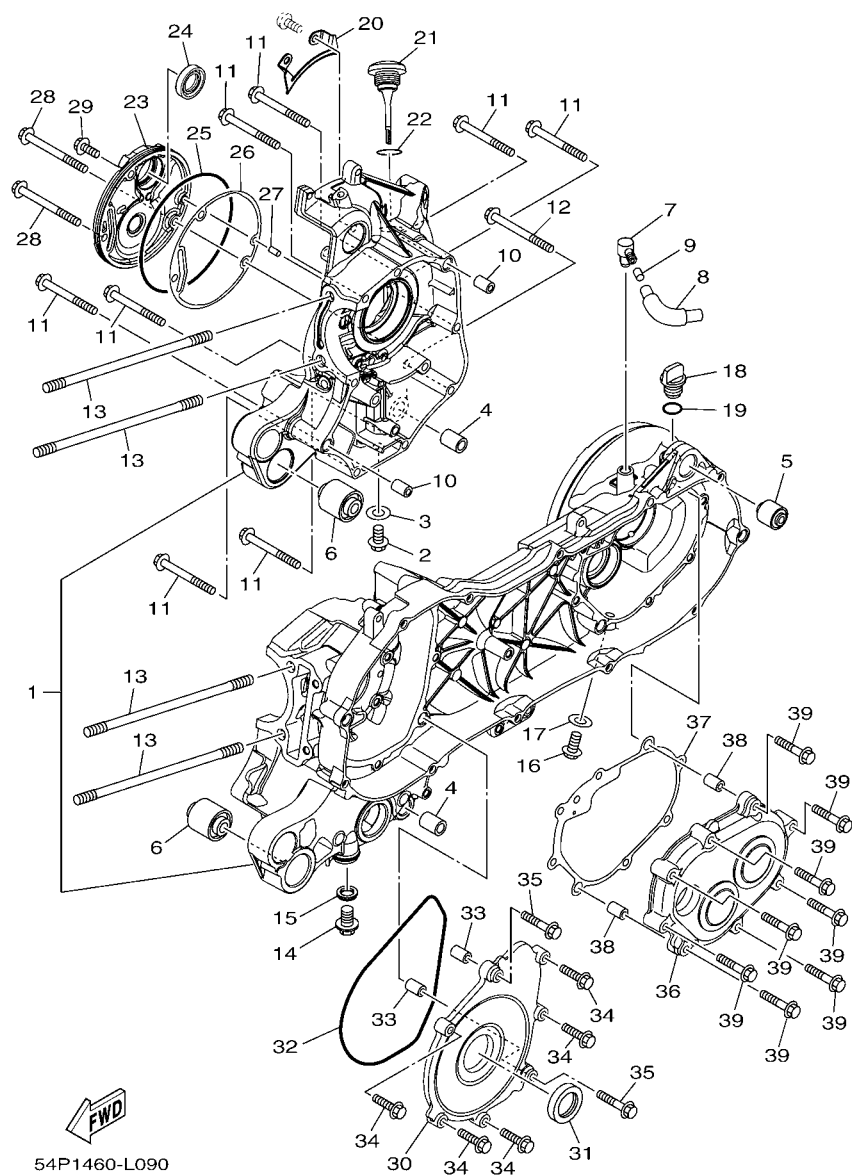


FIG. 9 CRANKCASE

REF. NO.	PART NO.	DESCRIPTION	1KP1				REMARKS
1	54P-E5150-00	CRANKCASE ASSY	1				
2	95022-08012	BOLT, FLANGE	1				
3	90430-08119	GASKET	1				
4	54P-F7121-00	BUSH	2				
5	5MX-F2216-00	BUSH, REAR SHOCK ABSORBER	1				
6	90388-10805	DAMPER	2				
7	54P-E5371-00	BREATHER	1				
8	54P-E5373-00	PIPE, BREATHER	1				
9	14D-E5408-00	ELEMENT 2	1				
10	91810-14809	PIN, DOWEL	2				
11	95022-06060	BOLT, FLANGE	8				
12	95022-06070	BOLT, FLANGE	1				
13	90116-08843	BOLT, STUD	4				
14	90340-12808	PLUG, STRAIGHT SCREW	1				
15	4YS-E1198-00	GASKET	1				
16	95812-08016	BOLT, FLANGE	1				
17	90430-08119	GASKET	1				
18	5LW-E5363-00	PLUG, OIL	1				
19	93210-148H8	O-RING	1				
20	54P-E5113-00	PLATE	1				
21	54P-E5362-00	PLUG, OIL LEVEL	1				
22	5LW-E3769-00	O-RING	1				
23	54P-E5417-00	COVER, CAP	1				
24	93102-19817	OIL SEAL	1				
25	93211-07800	O-RING	1				
26	54P-E5453-00	GASKET	1				
27	99480-05010	PIN	1				

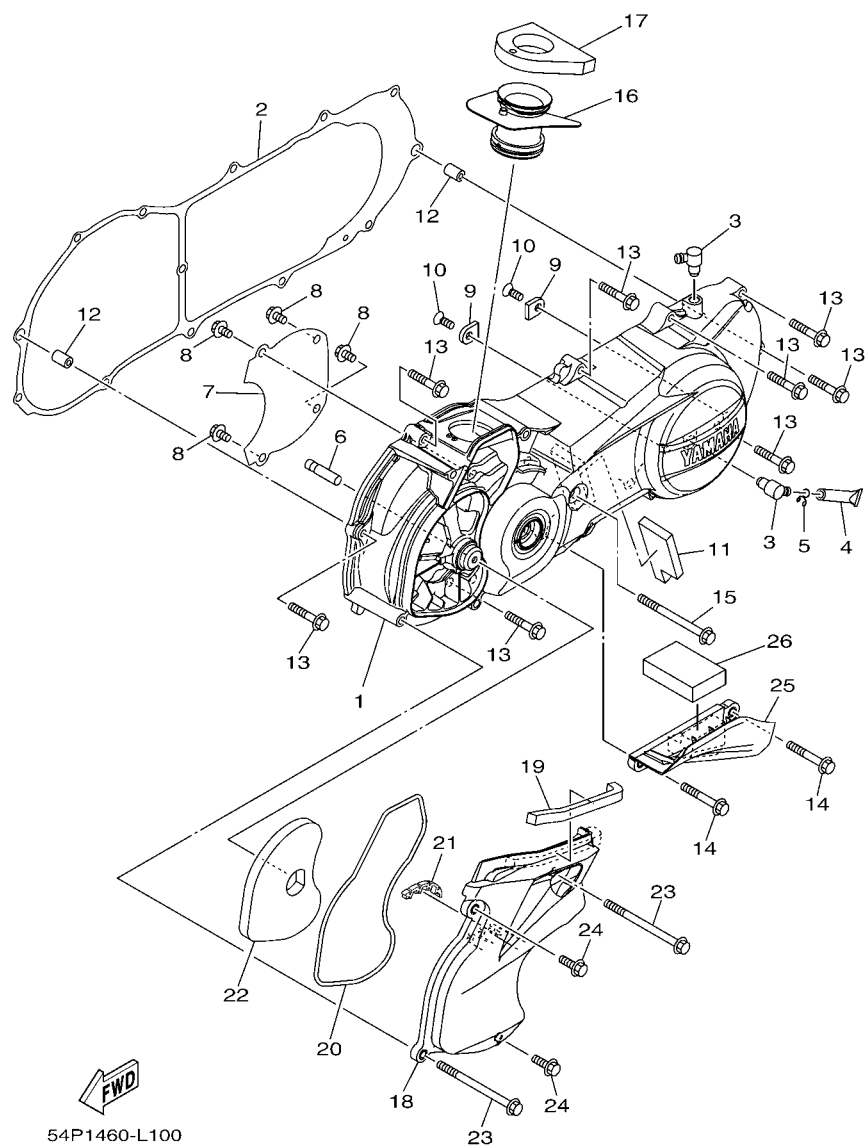


FIG. 10 CRANKCASE COVER 1

REF. NO.	PART NO.	DESCRIPTION	1KP1				REMARKS
1	54P-E5411-00	COVER, CRANKCASE 1	1				
2	54P-E5451-00	GASKET, CRANKCASE COVER 1	1				
3	54P-E5371-00	BREATHER	2				
4	4ST-E443E-00	PIPE, DRAIN	1				
5	90467-110A3	CLIP	1				
6	5LW-15659-01	SHAFT	1				
7	54P-E5191-00	PLATE	1				
8	95022-06010	BOLT, FLANGE	4				
9	54P-E5383-00	PLATE, BEARING COVER	2				
10	90151-06811	SCREW, COUNTERSUNK	2				
11	54P-E5316-00	DAMPER 1	1				
12	91810-14809	PIN, DOWEL	2				
13	95022-06035	BOLT, FLANGE	8				
14	95022-06045	BOLT, FLANGE	2				
15	95022-06080	BOLT, FLANGE	1				
16	54P-E5473-00	DUCT, AIR	1				
17	54P-E5408-00	ELEMENT 2	1				
18	54P-E5471-00	DUCT, AIR	1				
19	90520-10811	DAMPER, PLATE	1				
20	54P-E5472-00	SEAL, AIR DUCT	1				
21	54P-E5495-00	SEAL, PROTECTOR 1	1				
22	54P-E5407-00	ELEMENT 1	1				
23	95822-06090	BOLT, FLANGE	2				
24	95822-06020	BOLT, FLANGE	2				
25	54P-E5413-00	COVER	1				
26	90520-15806	DAMPER, PLATE	1				

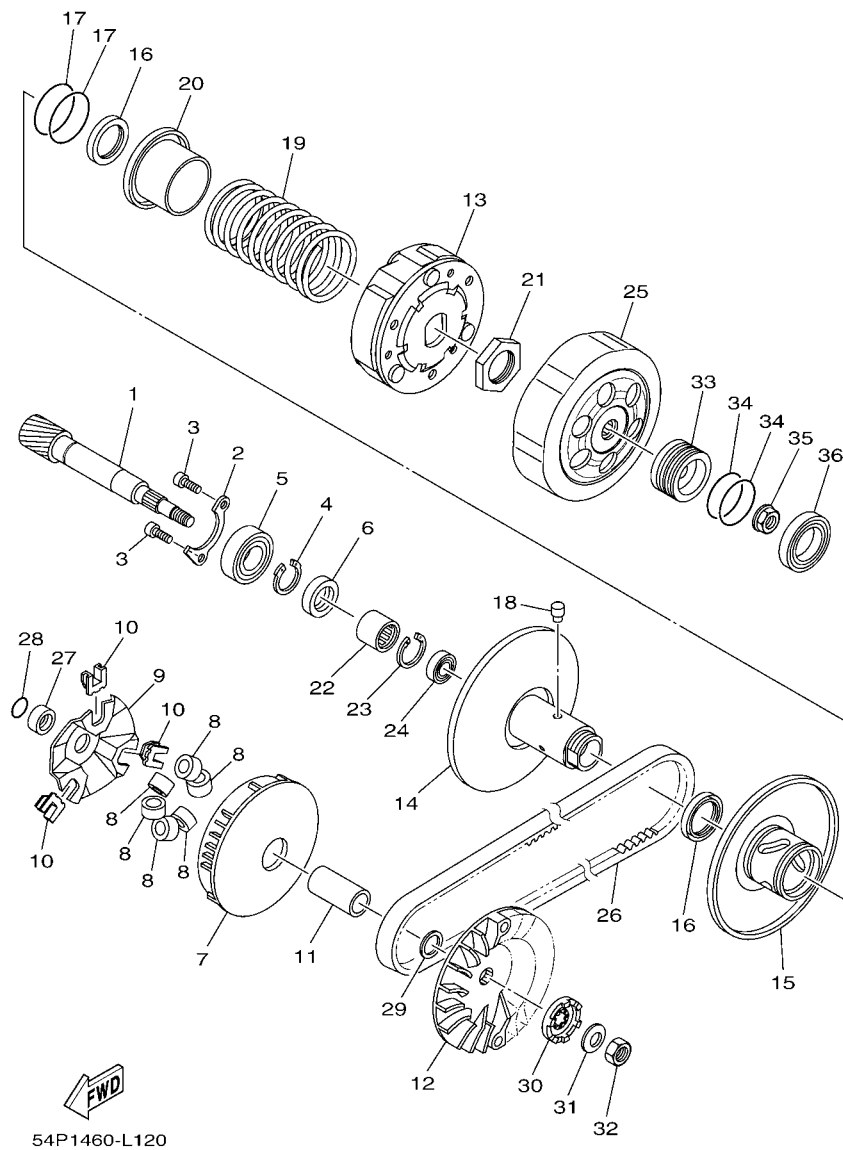


FIG. 12 CLUTCH

REF. NO.	PART NO.	DESCRIPTION	1KP1				REMARKS
1	54P-E6111-00	GEAR, PRIMARY DRIVE	1				
2	54P-E7471-00	PLATE, COVER	1				
3	91312-06010	BOLT	2				
4	99009-17400	CIRCLIP	1				
5	93306-253Y9	BEARING	1				
6	93102-17803	OIL SEAL	1				
7	54P-E7620-00	PRIMARY SLIDING SHEAVE COMP.	1				
8	54P-E7632-00	WEIGHT	6				
9	54P-E7623-00	CAM	1				
10	54P-E7653-00	SLIDER	3				
11	54P-E7674-00	COLLAR, GUIDE	1				
12	54P-E7611-00	SHEAVE, PRIMARY FIXED	1				
13	54P-E6620-00	CLUTCH CARRIER ASSY	1				
14	54P-E7660-00	SECONDARY FIXED SHEAVE COMP.	1				
15	54P-E7670-00	SECONDARY SLIDING SHEAVE	1				
16	54P-E7465-00	SEAL	2				
17	54P-E7465-10	SEAL	2				
18	5TL-E7664-00	PIN, GUIDE	3				
19	54P-E7683-00	SPRING, SECONDARY	1				
20	54P-E7684-00	SEAT, SECONDARY SPRING	1				
21	44D-E7668-00	NUT	1				
22	54P-E7678-10	BEARING	1				
23	44D-E5744-00	CIRCLIP	1				
24	54P-E7678-00	BEARING	1				
25	54P-E6611-00	CLUTCH HOUSING COMP.	1				
26	54P-E7641-00	V-BELT	1				
27	44D-E7645-00	COLLAR	1				

[illegible]

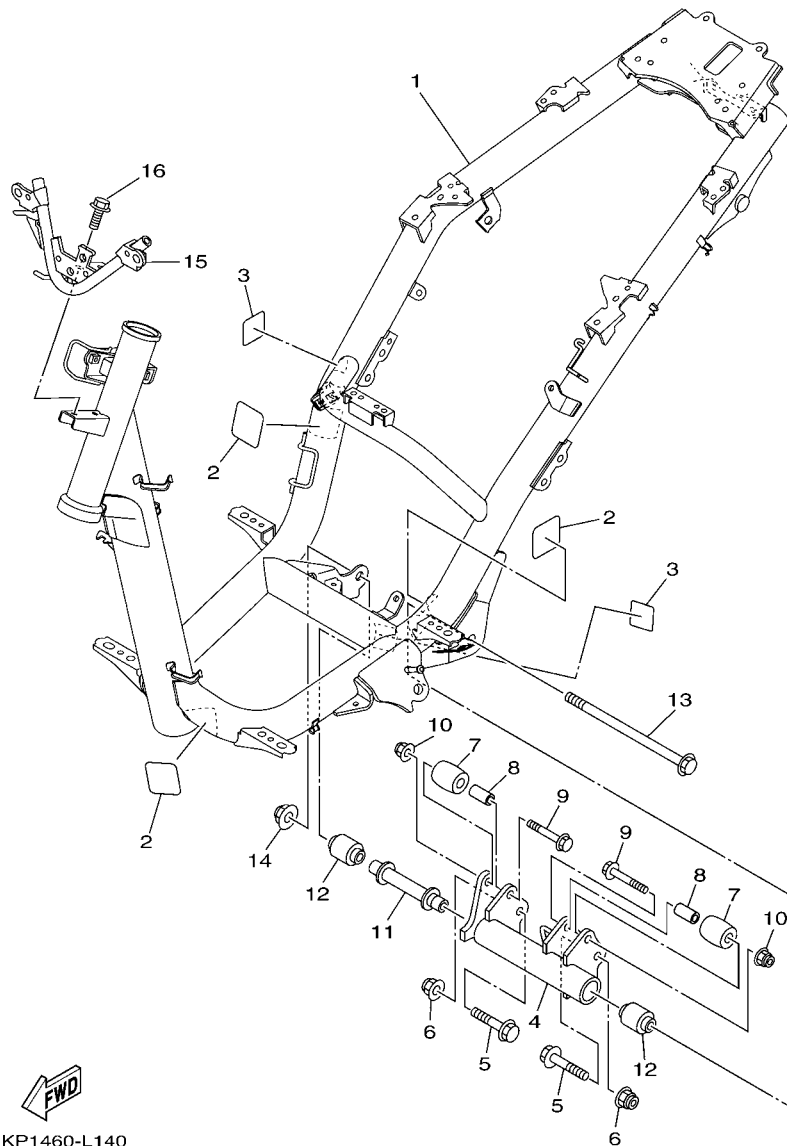


FIG. 14 FRAME

REF. NO.	PART NO.	DESCRIPTION	1KP1				REMARKS
1	1KP-F1110-00	FRAME COMP.	1				
2	54P-F1268-00	SEAL	3				
3	1KP-F1735-00	SEAL 2	2				
4	54P-F1410-00	ENGINE BRACKET COMP.	1				
5	90105-10283	BOLT, FLANGE	2				
6	95602-10200	NUT, U FLANGE	2				
7	44D-F7114-00	STOPPER, MAIN STAND	2				
8	90387-08821	COLLAR	2				
9	90105-088E3	BOLT, FLANGE	2				
10	95602-08200	NUT, SELF-LOCKING	2				
11	54P-F1459-00	SPACER	1				
12	90388-10800	DAMPER	2				
13	54P-F2141-00	SHAFT, PIVOT	1				
14	95602-10200	NUT, U FLANGE	1				
15	1KP-F8356-00	STAY 1	1				
16	95802-06010	BOLT, FLANGE	2				

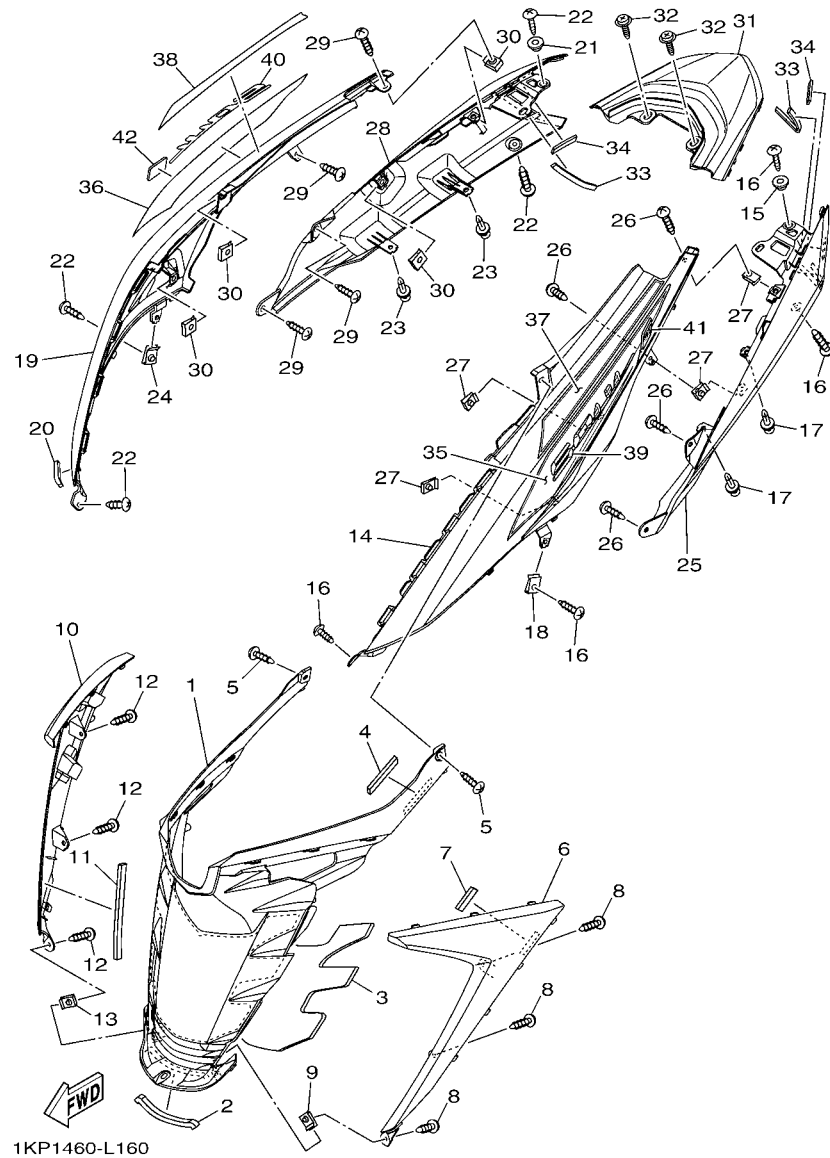


FIG. 16 SIDE COVER

REF. NO.	PART NO.	DESCRIPTION	1KP1				REMARKS
1	1KP-F172W-00	COVER	1				
2	90520-08804	DAMPER, PLATE	1				
3	1KP-F1746-00	DAMPER	1				
4	90520-02819	DAMPER, PLATE	1				
5	97707-50016	SCREW, TRUSS HEAD TAPPING	3				
6	1KP-F171L-00-7B	MOLE, SIDE COVER 1	1				BIB2
7	90520-02819	DAMPER, PLATE	1				
8	97707-50016	SCREW, TRUSS HEAD TAPPING	3				
9	90183-05807	NUT, SPRING	1				
10	1KP-F171M-00-7B	MOLE, SIDE COVER 2	1				BIB2
11	90520-08804	DAMPER, PLATE	1				
12	97707-50016	SCREW, TRUSS HEAD TAPPING	3				
13	90183-05807	NUT, SPRING	1				
14	1KP-F1711-00-P2	COVER, SIDE 1	1				UR FOR RSM2
	1KP-F1711-00-P0	COVER, SIDE 1	1				UR FOR RM7
	1KP-F1711-00-P1	COVER, SIDE 1	1				UR FOR WM6
	1KP-F1711-00-P3	COVER, SIDE 1	1				UR FOR BMC
	1KP-F1711-00-P5	COVER, SIDE 1	1				UR FOR LGM6
	1KP-F1711-00-P6	COVER, SIDE 1	1				UR FOR DPRMD
	1KP-F1711-00-P4	COVER, SIDE 1	1				UR FOR DRYM2
15	90387-05820	COLLAR	1				
16	97707-50016	SCREW, TRUSS HEAD TAPPING	4				
17	90269-06812	RIVET	2				
18	90183-05807	NUT, SPRING	1				
19	1KP-F1721-00-P2	COVER, SIDE 2	1				UR FOR RSM2
	1KP-F1721-00-P0	COVER, SIDE 2	1				UR FOR RM7
	1KP-F1721-00-P1	COVER, SIDE 2	1				UR FOR WM6

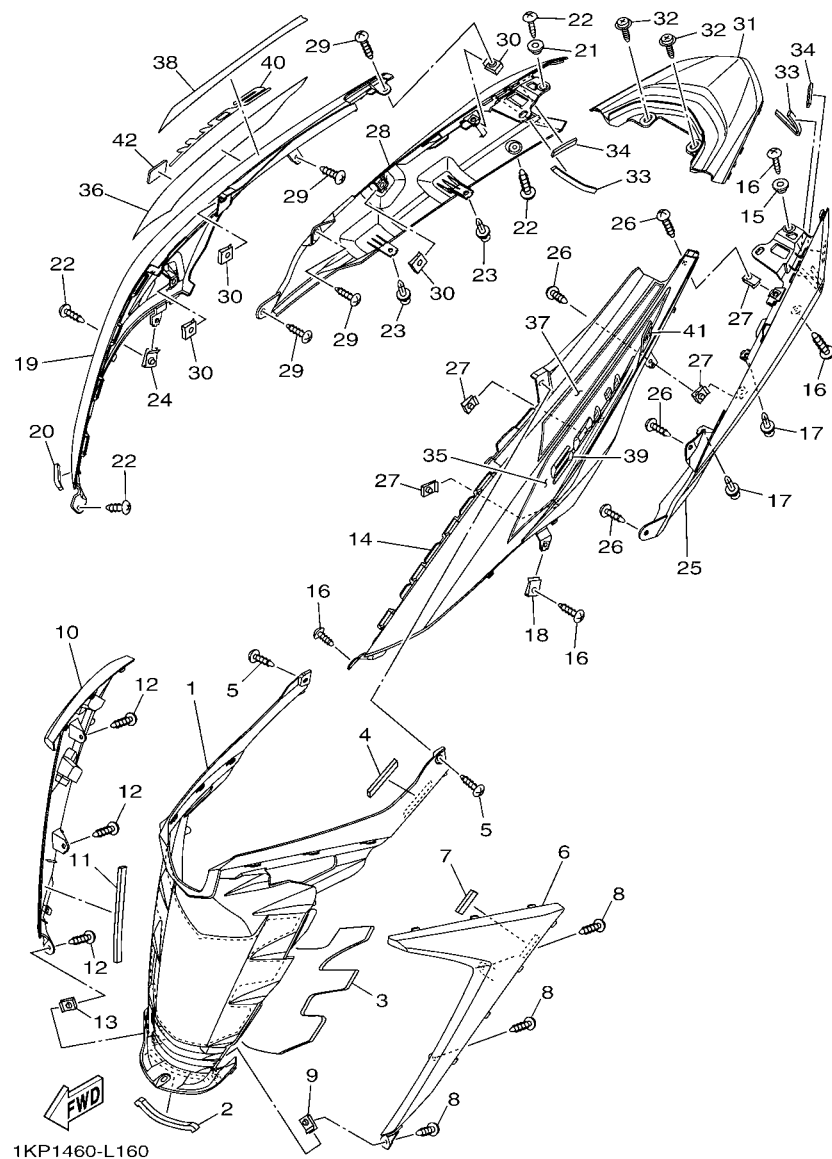


FIG. 16 SIDE COVER

REF. NO.	PART NO.	DESCRIPTION	1KP1				REMARKS
19	1KP-F1721-00-P3	COVER, SIDE 2	1				UR FOR BMC
	1KP-F1721-00-P5	COVER, SIDE 2	1				UR FOR LGM6
	1KP-F1721-00-P6	COVER, SIDE 2	1				UR FOR DPRMD
	1KP-F1721-00-P4	COVER, SIDE 2	1				UR FOR DRYM2
20	90520-05812	DAMPER, PLATE	1				
21	90387-05820	COLLAR	1				
22	97707-50016	SCREW, TRUSS HEAD TAPPING	4				
23	90269-06812	RIVET	2				
24	90183-05807	NUT, SPRING	1				
25	1KP-F1731-00-7B	COVER, SIDE 3	1				BIB2
26	97707-50012	SCREW, TRUSS HEAD TAPPING	4				
27	90183-05807	NUT, SPRING	4				
28	1KP-F1741-00-7B	COVER, SIDE 4	1				BIB2
29	97707-50012	SCREW, TRUSS HEAD TAPPING	4				
30	90183-05807	NUT, SPRING	4				
31	1KP-F171E-00-P2	COVER, SIDE 5	1				UR FOR RSM2
	1KP-F171E-00-P0	COVER, SIDE 5	1				UR FOR RM7
	1KP-F171E-00-P1	COVER, SIDE 5	1				UR FOR WM6
	1KP-F171E-00-P3	COVER, SIDE 5	1				UR FOR BMC
	1KP-F171E-00-P5	COVER, SIDE 5	1				UR FOR LGM6
	1KP-F171E-00-P6	COVER, SIDE 5	1				UR FOR DPRMD
	1KP-F171E-00-P4	COVER, SIDE 5	1				UR FOR DRYM2
32	90159-06810	SCREW, WITH WASHER	2				
33	1UB-F8372-00	DAMPER	2				
34	90520-02819	DAMPER, PLATE	2				
35	1KP-F173E-00	GRAPHIC 1	1				UR FOR RSM2
	1KP-F173E-10	GRAPHIC 1	1				UR FOR RM7

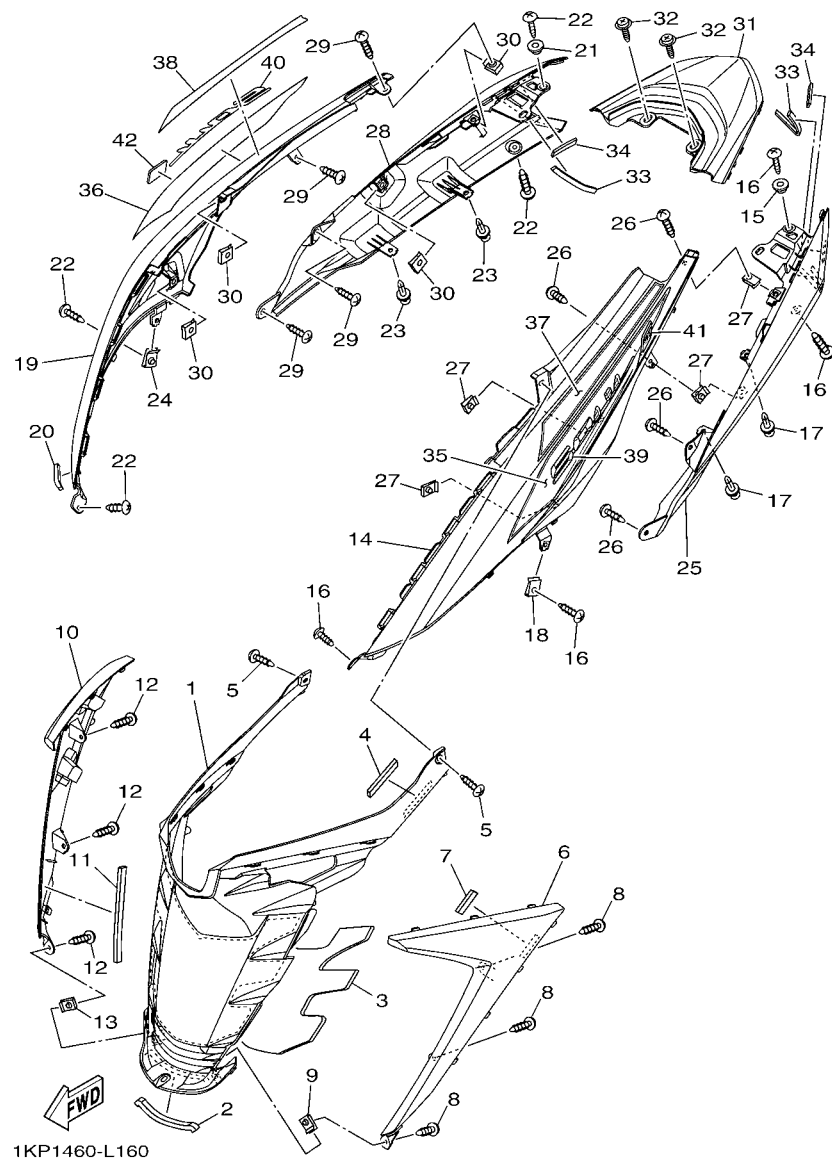


FIG. 16 SIDE COVER

REF. NO.	PART NO.	DESCRIPTION	1KP1				REMARKS
35	1KP-F173E-20	GRAPHIC 1	1				UR FOR WM6
	1KP-F173E-30	GRAPHIC 1	1				UR FOR BMC
	1KP-F173E-40	GRAPHIC 1	1				UR FOR LGM6
	1KP-F173E-50	GRAPHIC 1	1				UR FOR DPRMD
	1KP-F173E-60	GRAPHIC 1	1				UR FOR DRYM2
36	1KP-F173F-00	GRAPHIC 2	1				UR FOR RSM2
	1KP-F173F-10	GRAPHIC 2	1				UR FOR RM7
	1KP-F173F-20	GRAPHIC 2	1				UR FOR WM6
	1KP-F173F-30	GRAPHIC 2	1				UR FOR BMC
	1KP-F173F-40	GRAPHIC 2	1				UR FOR LGM6
	1KP-F173F-50	GRAPHIC 2	1				UR FOR DPRMD
	1KP-F173F-60	GRAPHIC 2	1				UR FOR DRYM2
37	1KP-F174G-00	GRAPHIC 3	1				UR FOR RSM2
	1KP-F174G-10	GRAPHIC 3	1				UR FOR RM7
	1KP-F174G-20	GRAPHIC 3	1				UR FOR WM6
	1KP-F174G-30	GRAPHIC 3	1				UR FOR BMC
	1KP-F174G-40	GRAPHIC 3	1				UR FOR LGM6
	1KP-F174G-50	GRAPHIC 3	1				UR FOR DPRMD
	1KP-F174G-60	GRAPHIC 3	1				UR FOR DRYM2
38	1KP-F174H-00	GRAPHIC 4	1				UR FOR RSM2
	1KP-F174H-10	GRAPHIC 4	1				UR FOR RM7
	1KP-F174H-20	GRAPHIC 4	1				UR FOR WM6
	1KP-F174H-30	GRAPHIC 4	1				UR FOR BMC
	1KP-F174H-40	GRAPHIC 4	1				UR FOR LGM6
	1KP-F174H-50	GRAPHIC 4	1				UR FOR DPRMD
	1KP-F174H-60	GRAPHIC 4	1				UR FOR DRYM2
39	1KP-F157B-00	EMBLEM	1				

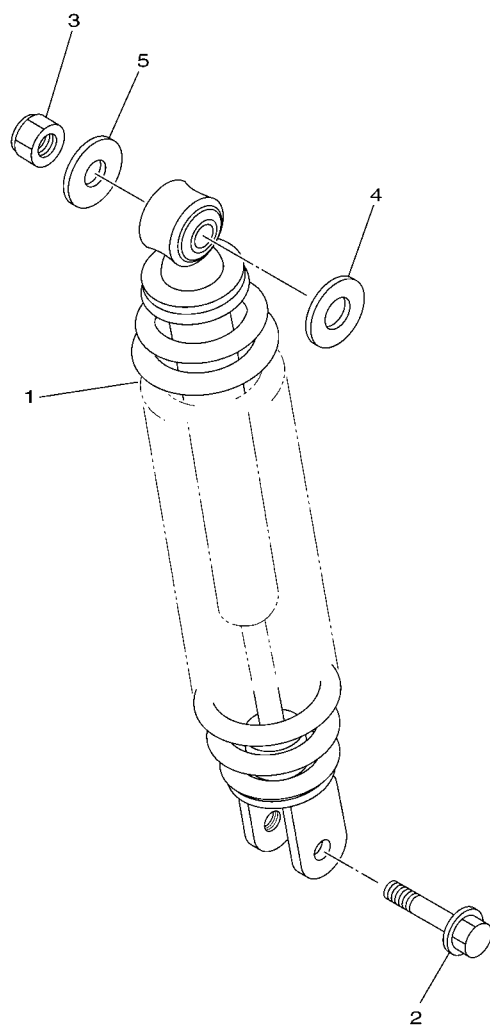


FIG. 17 REAR ARM & SUSPENSION

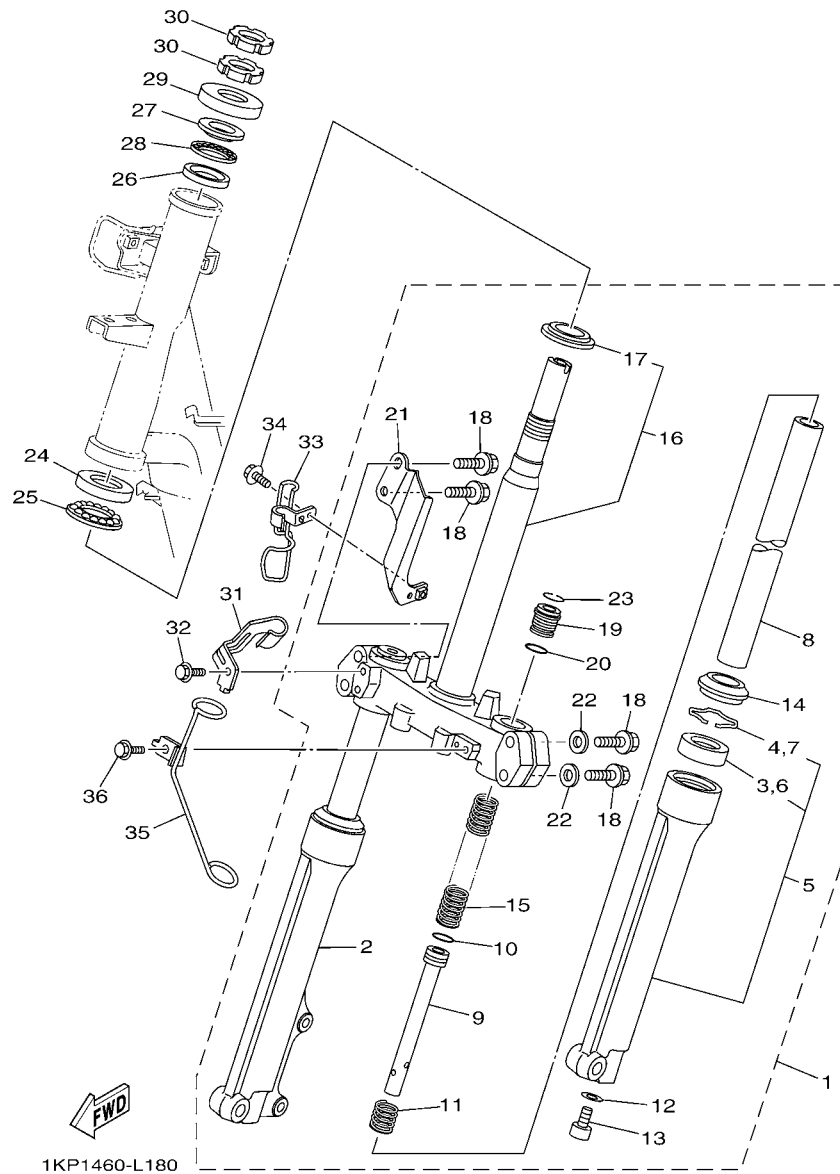


FIG. 18 STEERING

REF. NO.	PART NO.	DESCRIPTION	1KP1				REMARKS
1	54P-F3100-00	FRONT FORK ASSY	1				
2	54P-F3136-00	.TUBE, OUTER (RIGHT)	1				
3	3AY-F3145-00	..OIL SEAL	1				
4	5P0-F3156-00	..RING, SNAP	1				
5	54P-F3126-00	.TUBE, OUTER (LEFT)	1				
6	3AY-F3145-00	..OIL SEAL	1				
7	5P0-F3156-00	..RING, SNAP	1				
8	28D-F3110-00	.INNER TUBE COMP.1	2				
9	28D-F3170-00	.CYLINDER COMP., FRONT FORK	2				
10	2JG-F3157-00	.RING, PISTON	2				
11	5D9-F3152-00	.SPRING, SUB	2				
12	509-F3158-L0	.GASKET	2				
13	278-F3181-50	.BOLT, HEXAGON SOCKET HEAD	2				
14	5LM-F3144-00	.SEAL, DUST	2				
15	28D-F3141-00	.SPRING, FRONT FORK	2				
16	28D-F3340-00	..UNDER BRACKET COMP.	1				
17	18G-23411-00	..RACE, BALL 1	1				
18	4D0-F3346-00	.BOLT 1	4				
19	28D-F3111-00	.BOLT, CAP	2				
20	2JG-F3147-00	.O-RING	2				
21	54P-F334G-00	.BRACKET 1	1				
22	4D0-F3165-00	.WASHER, FELT	2				
23	5P0-F3153-00	.RING, SNAP	1				
24	28D-F3412-00	RACE, BALL 2	1				
25	5TL-2341E-00	RETAINER, BALL BEARING (16)	1				
26	54P-F3412-00	RACE, BALL 2	1				
27	54P-F3411-00	RACE, BALL 1	1				

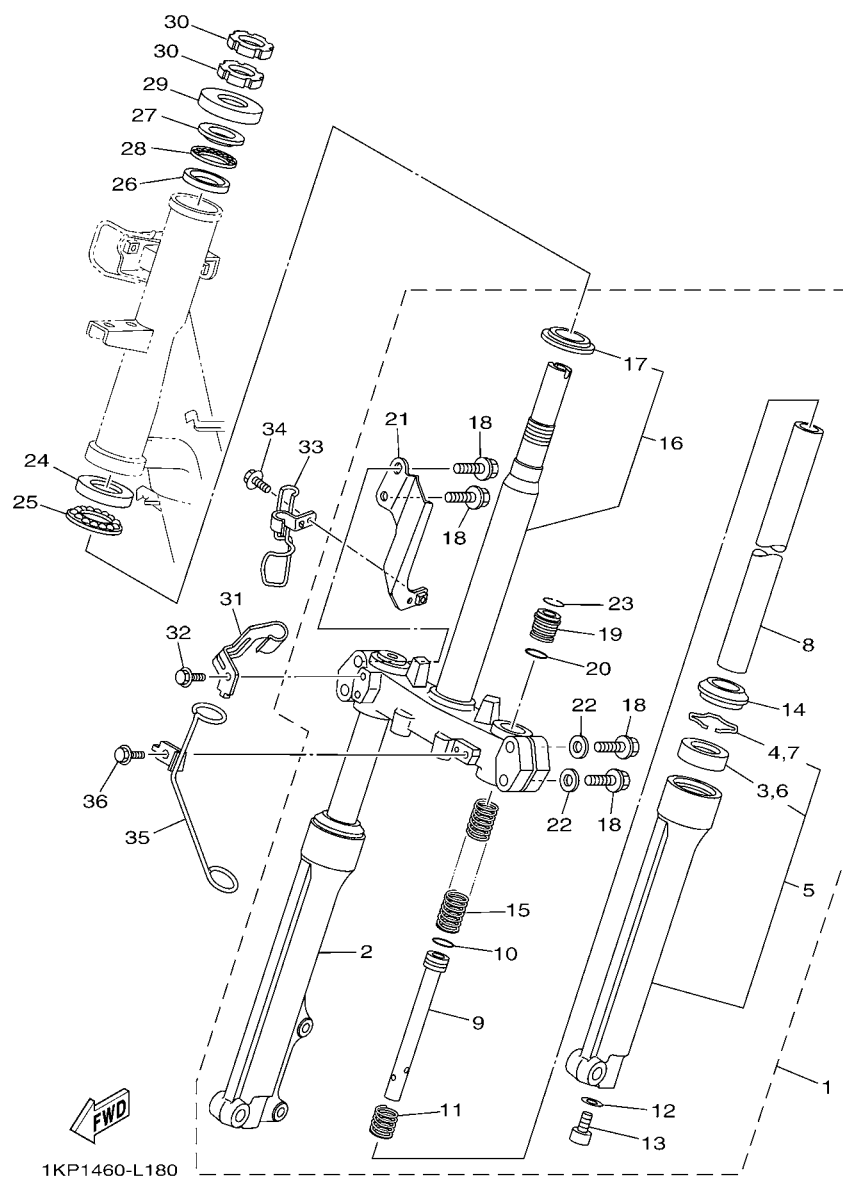


FIG. 18 STEERING

[illegible]

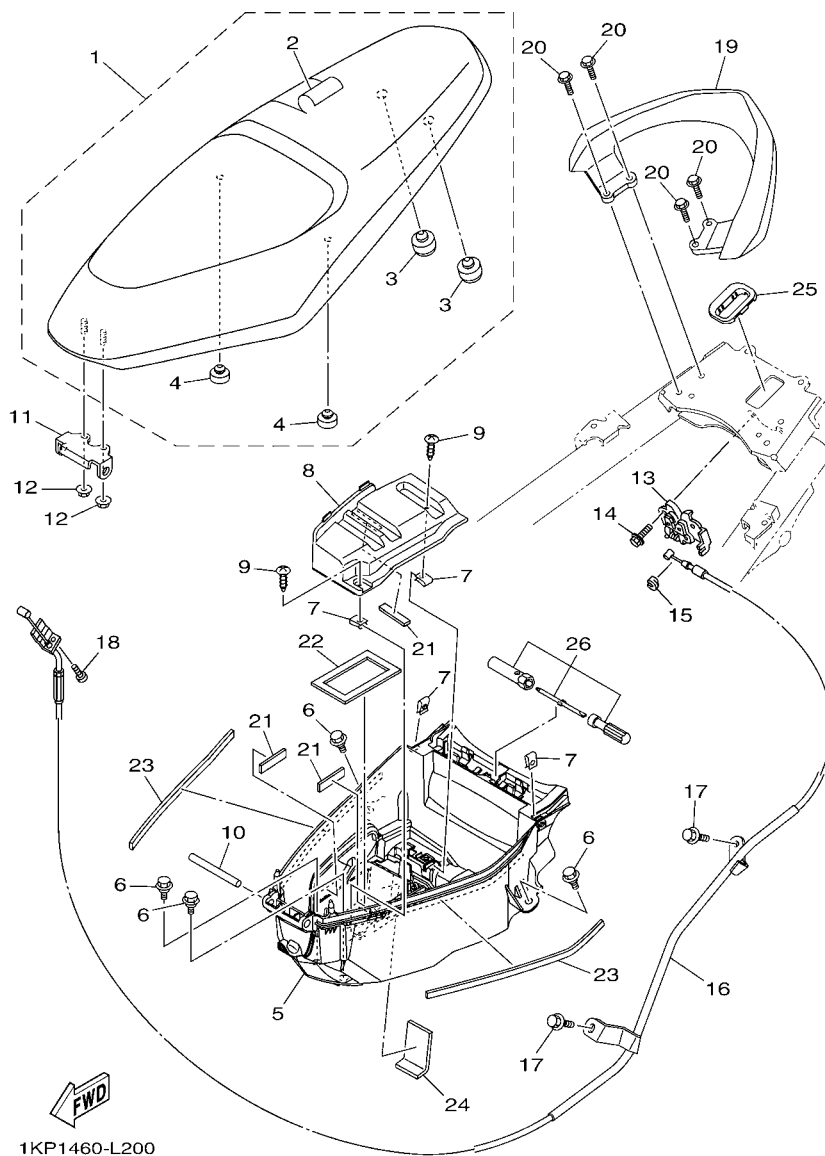


FIG. 20 SEAT

REF. NO.	PART NO.	DESCRIPTION	1KP1				REMARKS
1	1KP-F4730-00	DOUBLE SEAT ASSY	1				
2	1KP-F470F-00	.SEAT COVER COMP.	1				
3	5D9-F4741-00	.PAD, SEAT	2				
4	3C1-F4741-00	.PAD, SEAT	2				
5	1KP-F4704-00	BOX ASSY	1				
6	90109-06202	BOLT	4				
7	90183-05807	NUT, SPRING	4				
8	54P-H2129-00	COVER, BATTERY	1				
9	97707-50012	SCREW, TRUSS HEAD TAPPING	2				
10	5TL-F4727-00	PIN, SEAT FITTING	1				
11	54P-F4726-00	HINGE, SEAT	1				
12	95702-06500	NUT, FLANGE	2				
13	40D-F4780-01	SEAT LOCK ASSY	1				
14	95022-06010	BOLT, FLANGE	2				
15	1S7-F4768-00	STOPPER	1				
16	1KP-F478E-00	CABLE, SEAT LOCK	1				
17	95802-06010	BOLT, FLANGE	2				
18	98507-05010	SCREW, PAN HEAD	1				
19	1KP-F4773-00-P2	HANDLE, SEAT	1				UR FOR RSM2
	1KP-F4773-00-P0	HANDLE, SEAT	1				UR FOR RM7
	1KP-F4773-00-P1	HANDLE, SEAT	1				UR FOR WM6
	1KP-F4773-00-P3	HANDLE, SEAT	1				UR FOR BMC
	1KP-F4773-00-P5	HANDLE, SEAT	1				UR FOR LGM6
	1KP-F4773-00-P6	HANDLE, SEAT	1				UR FOR DPRMD
	1KP-F4773-00-P4	HANDLE, SEAT	1				UR FOR DRYM2
20	95822-06020	BOLT, FLANGE	4				
21	90520-03806	DAMPER, PLATE	3				

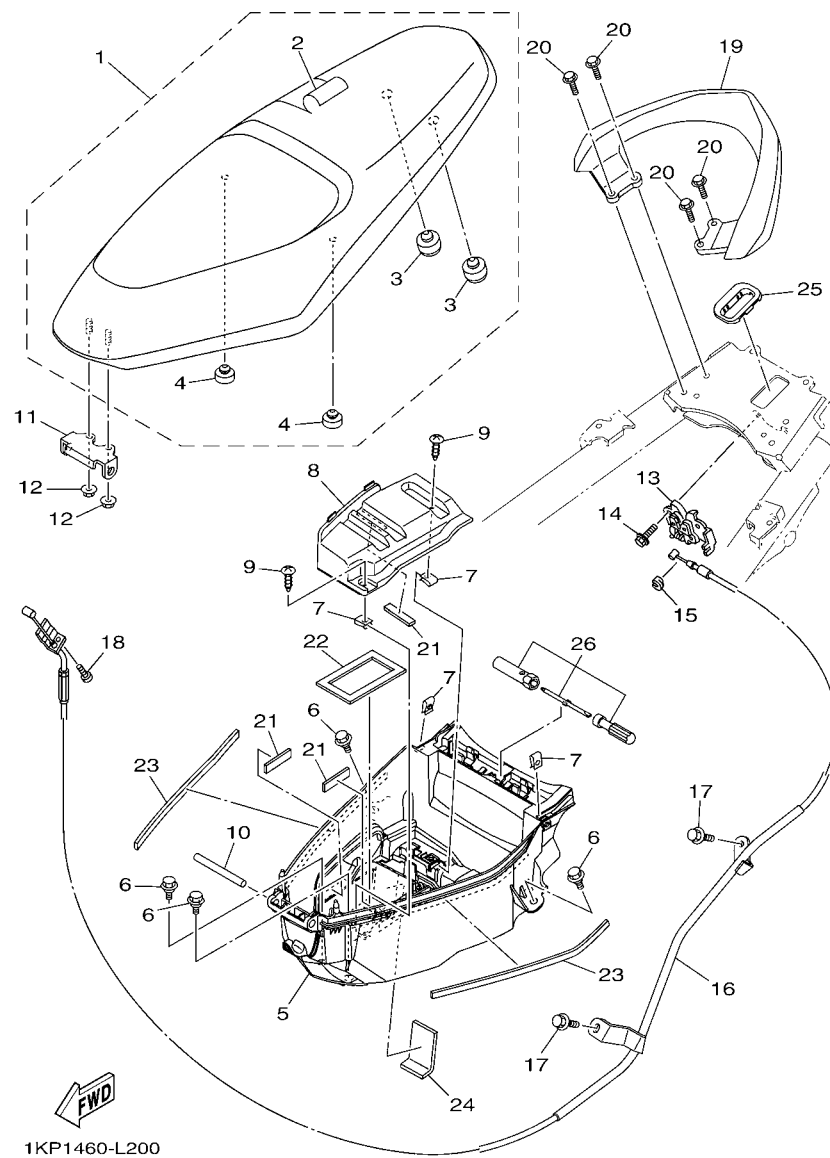


FIG. 20 SEAT

[illegible]

[illegible]

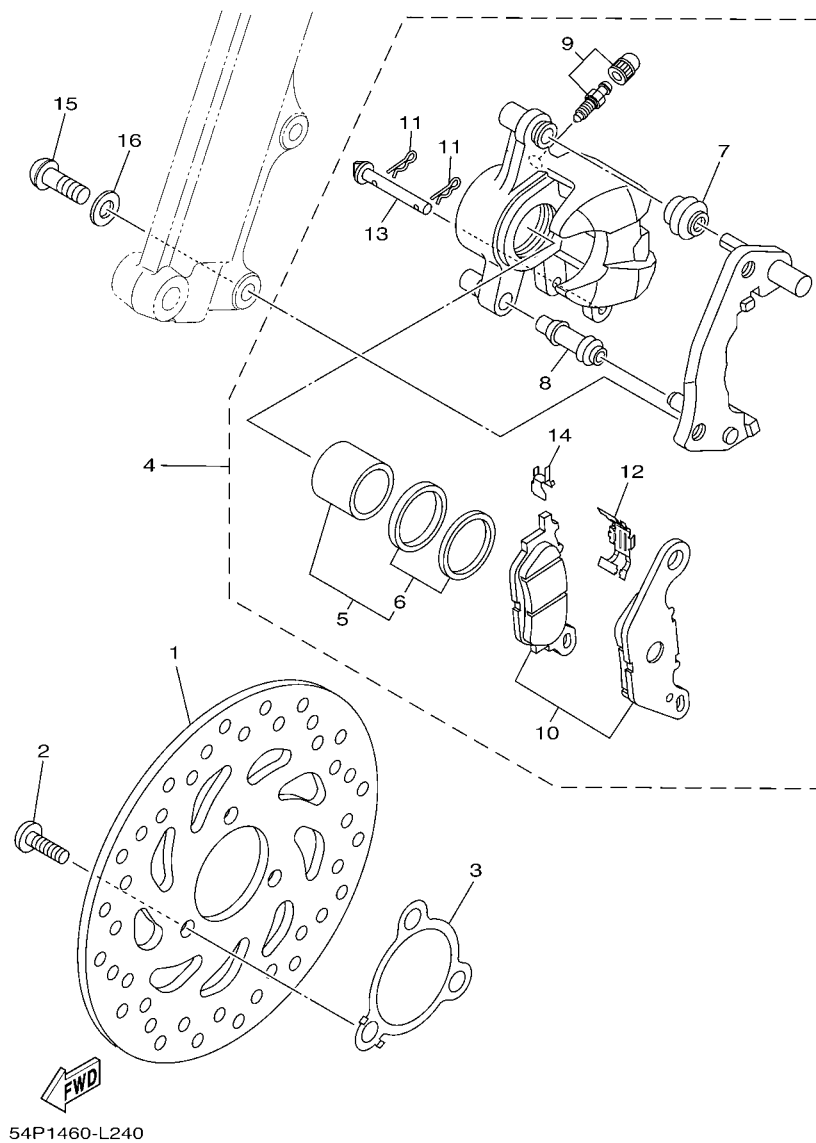


FIG. 22 FRONT BRAKE CALIPER

REF. NO.	PART NO.	DESCRIPTION	1KP1				REMARKS
1	1KP-F582U-00	DISK, BRAKE (RIGHT)	1				
2	90111-08815	BOLT,HEX. SOCKET BUTTON	3				
3	54P-F518A-00	PLATE, FITTING	1				
4	54P-F580U-00	CALIPER ASSY (RIGHT)	1				
5	5P0-F5802-00	.PISTON ASSY, CALIPER	1				
6	5YP-F5803-50	..CALIPER SEAL KIT	1				
7	5YP-F5917-00	.BOOT, CALIPER	1				
8	5YP-F5937-00	.BOOT 2	1				
9	4C9-W0048-00	.BLEED SCREW KIT	1				
10	3C1-F5805-10	.BRAKE PAD KIT	1				
11	5YP-F5925-01	.CLIP	2				
12	5P0-F5919-00	.SUPPORT, PAD	1				
13	5YP-F5924-00	.PIN, PAD	1				
14	5YP-F5939-00	.CLIP, PAD	1				
15	90149-10804	SCREW	2				
16	92902-10200	WASHER	2				

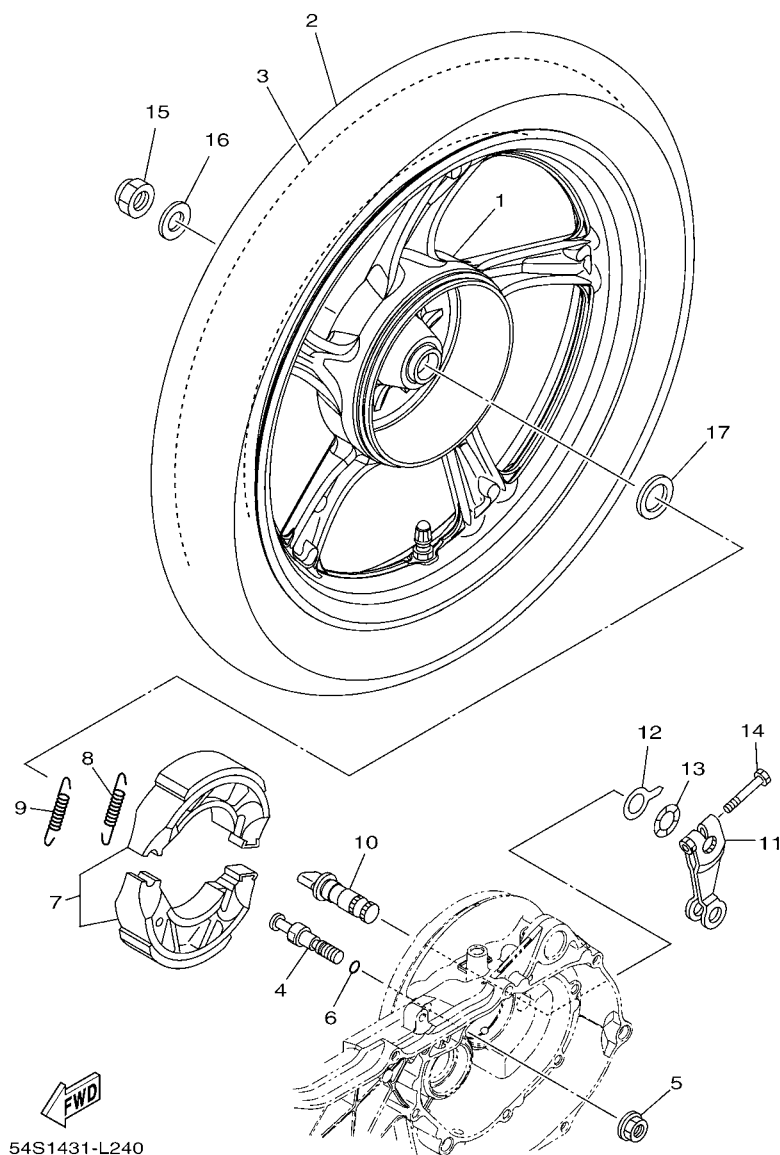


FIG. 23 REAR WHEEL

REF. NO.	PART NO.	DESCRIPTION	QTY				REMARKS
1	54P-F5338-00-33	CAST WHEEL, REAR (0033,YB)	1				YB
2	94108-14802	TIRE (80/90-14M/C 40P NR76)	1				INOUE
3	94208-14802	TUBE (80/90-14M/C TR4)	1				INOUE
4	54P-F5326-00	PIN, PIVOT	1				
5	95702-10500	NUT, FLANGE	1				
6	93210-07802	O-RING	1				
7	5MX-F530K-00	BRAKE SHOE SET	1				
8	90506-12001	SPRING, TENSION	1				
9	90506-15001	SPRING, TENSION	1				
10	5MX-F5351-00	CAMSHAFT	1				
11	5LW-F5355-00	LEVER, CAMSHAFT	1				
12	5MX-F533A-00	PLATE, INDICATOR	1				
13	90206-14093	WASHER, WAVE	1				
14	90101-06046	BOLT	1				
15	90185-14814	NUT, SELF-LOCKING	1				
16	90201-14820	WASHER, PLATE	1				
17	90201-20276	WASHER, PLATE (T=1.0)	1				

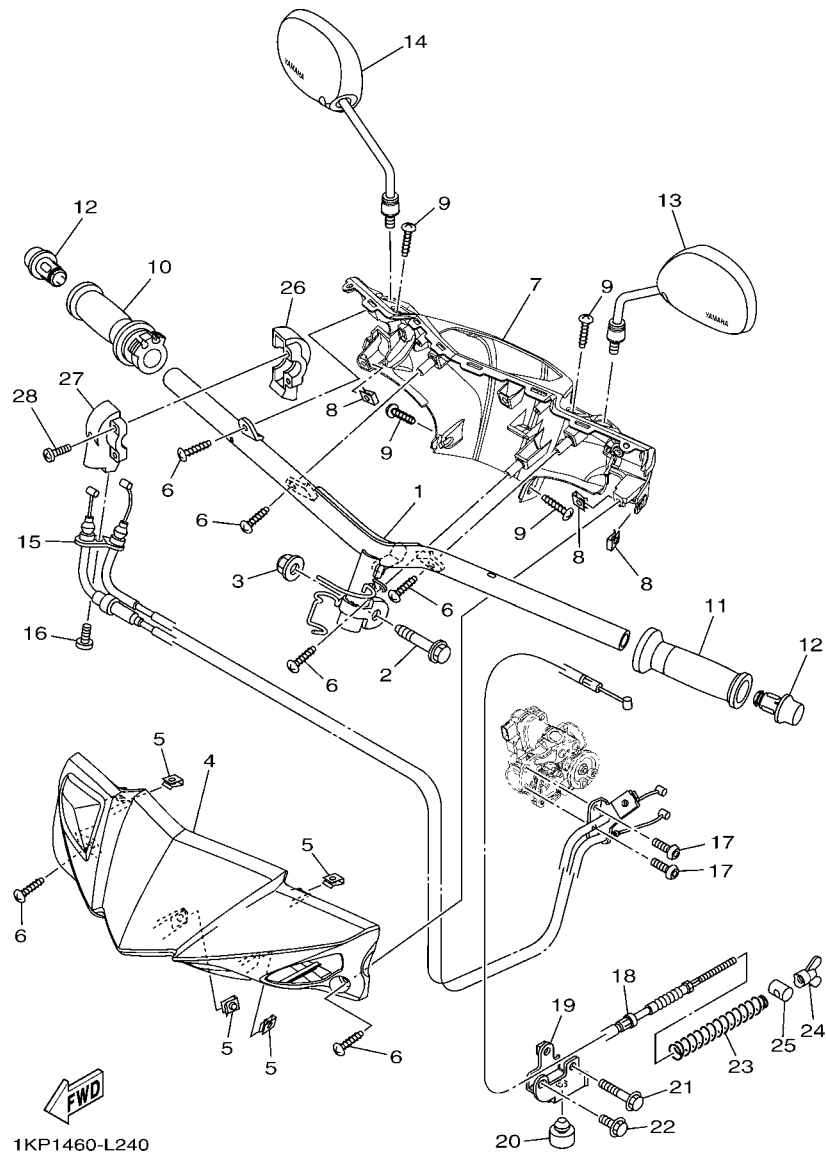


FIG. 24 STEERING HANDLE & CABLE

REF. NO.	PART NO.	DESCRIPTION	1KP1				REMARKS
1	54P-F6110-00	HANDLE COMP.	1				
2	90105-10036	BOLT, FLANGE	1				
3	90185-10815	NUT, SELF-LOCKING	1				
4	1KP-F6143-00-P2	COVER, HAND UPPER 1	1				UR FOR RSM2
	1KP-F6143-00-P0	COVER, HAND UPPER 1	1				UR FOR RM7
	1KP-F6143-00-P1	COVER, HAND UPPER 1	1				UR FOR WM6
	1KP-F6143-00-P3	COVER, HAND UPPER 1	1				UR FOR BMC
	1KP-F6143-00-P5	COVER, HAND UPPER 1	1				UR FOR LGM6
	1KP-F6143-00-P6	COVER, HAND UPPER 1	1				UR FOR DPRMD
	1KP-F6143-00-P4	COVER, HAND UPPER 1	1				UR FOR DRYM2
5	90183-05807	NUT, SPRING	4				
6	97707-50016	SCREW, TRUSS HEAD TAPPING	6				
7	1KP-F6145-00	COVER, HAND UPPER 2	1				
8	90183-05807	NUT, SPRING	3				
9	97707-50016	SCREW, TRUSS HEAD TAPPING	4				
10	44D-F6240-00	GRIP ASSY	1				
11	44D-F6241-00	GRIP	1				
12	54P-F6246-00	END, GRIP	2				
13	2P2-F6280-11	REAR VIEW MIRROR ASSY (LEFT)	1				
14	2P2-F6290-11	REAR VIEW MIRROR ASSY (RIGHT)	1				
15	54P-F6301-10	THROTTLE CABLE ASSY	1				
16	92012-05016	BOLT, BUTTON HEAD	1				
17	92012-05010	BOLT, BUTTON HEAD	2				
18	54P-F6351-00	CABLE, BRAKE	1				
19	54P-F637G-00	HOLDER, WIRE	1				
20	54P-F7114-00	STOPPER, MAIN STAND	1				
21	95022-06040	BOLT, FLANGE	1				

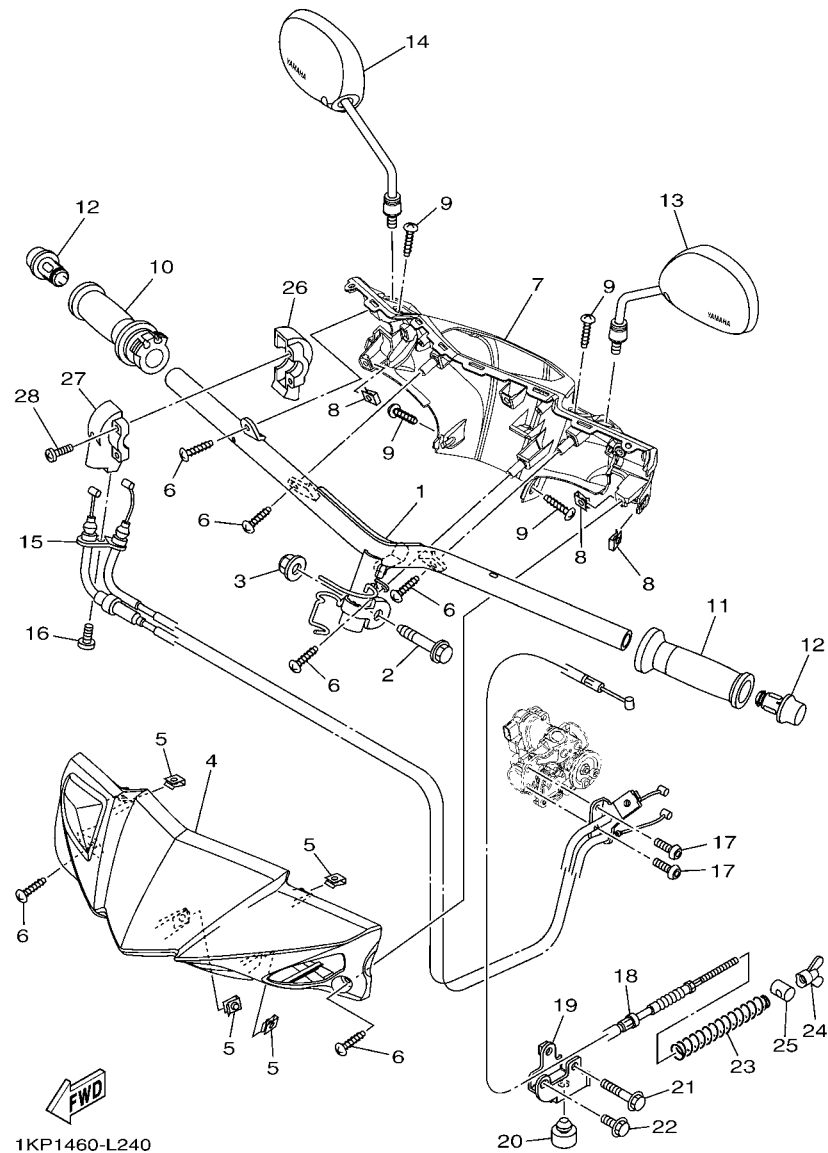


FIG. 24 STEERING HANDLE & CABLE

[illegible]

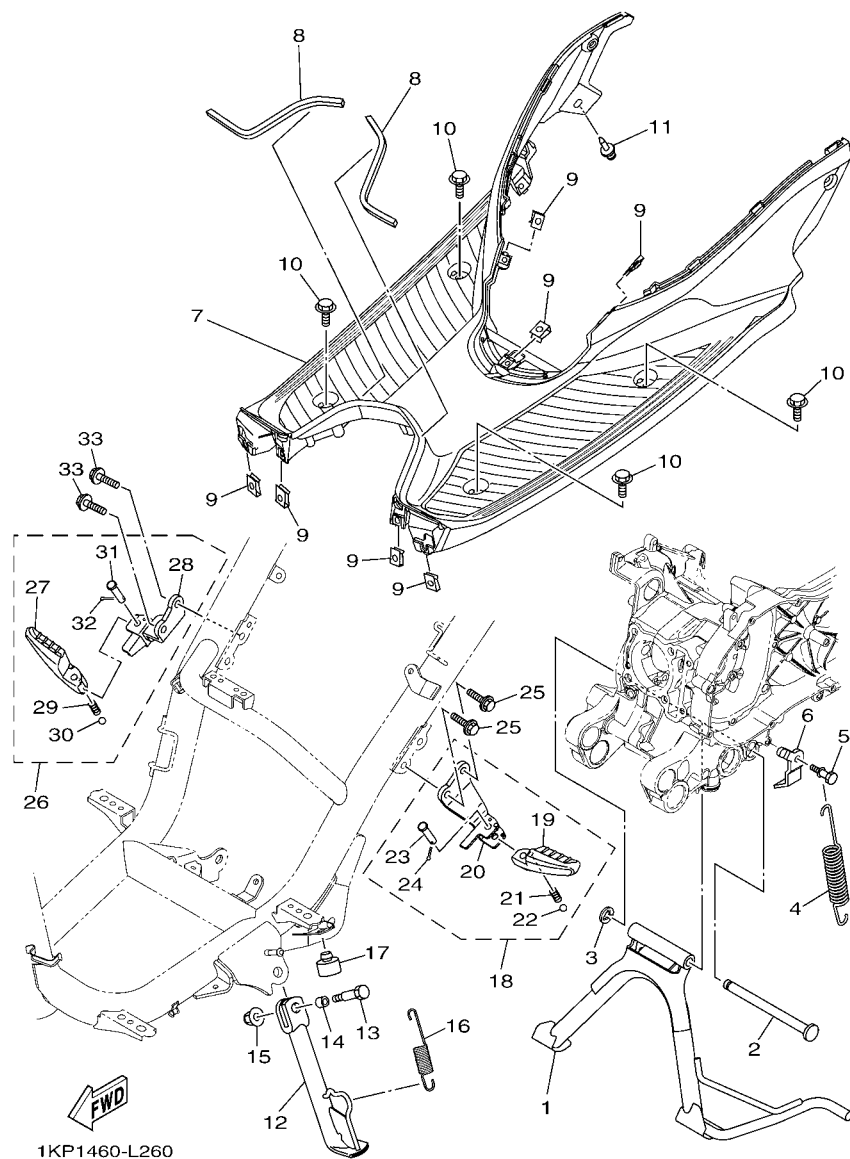


FIG. 26 STAND & FOOTREST

REF. NO.	PART NO.	DESCRIPTION	1KP1				REMARKS
1	54P-F7111-00	STAND, MAIN	1				
2	54P-F7112-00	SHAFT, MAIN STAND	1				
3	99002-08600	CLIP	1				
4	90506-35821	SPRING, TENSION	1				
5	5LW-F7254-00	HOOK	1				
6	54P-F7267-00	GUIDE, WIRE	1				
7	1KP-F7481-00	BOARD, FOOTREST	1				
8	90520-08802	DAMPER, PLATE	2				
9	90183-05807	NUT, SPRING	7				
10	90119-06044	BOLT, WITH WASHER	4				
11	90269-06812	RIVET	1				
12	54P-F7311-00	STAND, SIDE	1				
13	90101-08847	BOLT	1				
14	90387-08820	COLLAR	1				
15	95602-08200	NUT, SELF-LOCKING	1				
16	90506-20514	SPRING, TENSION	1				
17	4YY-F7114-00	STOPPER, MAIN STAND	1				
18	54P-F7430-00	REAR FOOTREST ASSY 1	1				
19	54P-F7431-00	.FOOTREST, REAR 1	1				
20	54P-F7432-00	.BRACKET 1	1				
21	90501-12743	.SPRING, COMPRESSION	1				
22	93501-04843	.BALL	1				
23	91701-08035	.PIN	1				
24	91401-25015	.PIN, COTTER	1				
25	95802-08030	BOLT, FLANGE	2				
26	54P-F7440-00	REAR FOOTREST ASSY 2	1				
27	54P-F7441-00	.FOOTREST, REAR 2	1				

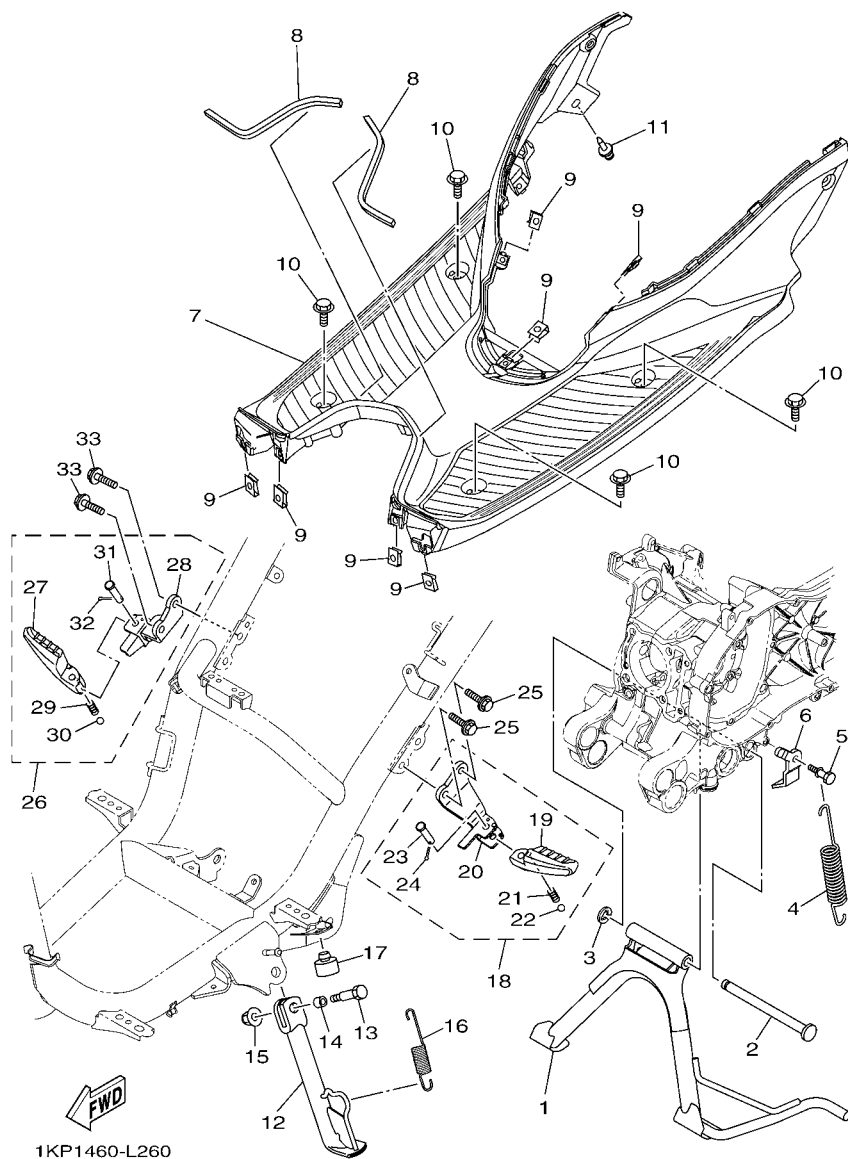


FIG. 26 STAND & FOOTREST

[illegible]

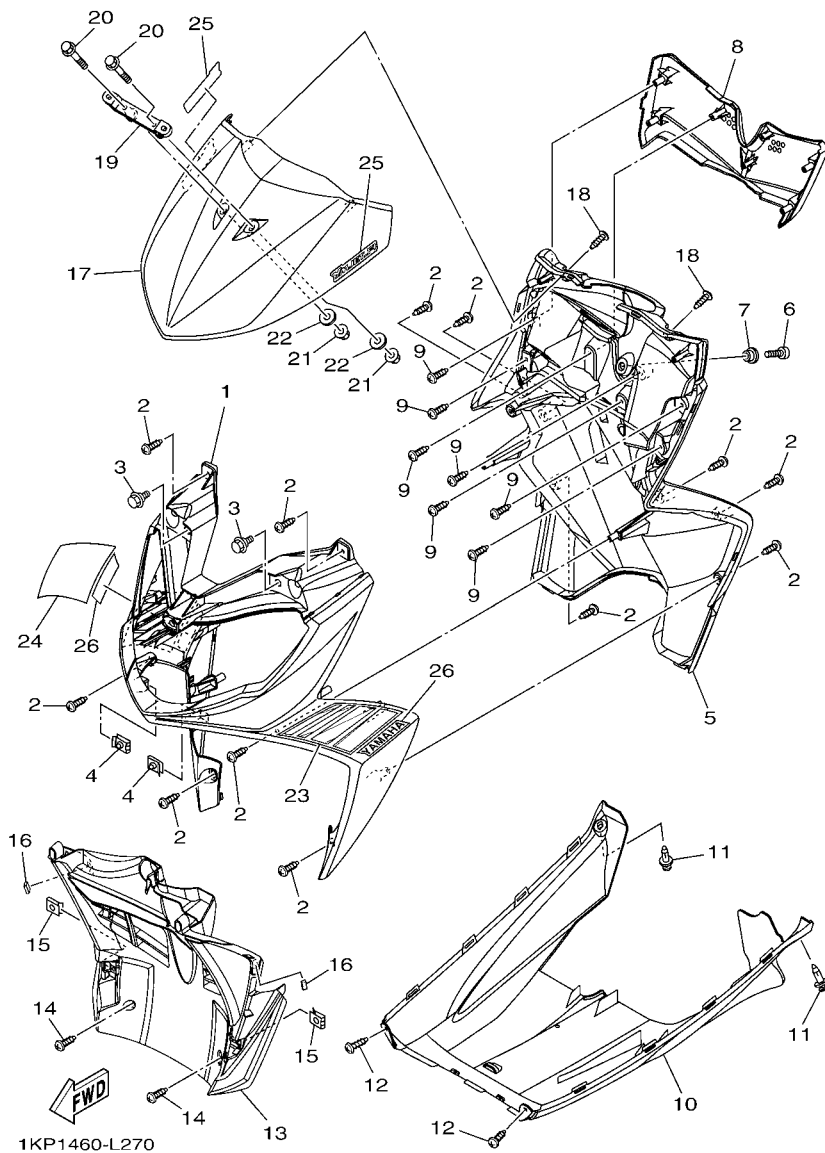


FIG. 27 LEG SHIELD

REF. NO.	PART NO.	DESCRIPTION	1KP1				REMARKS
1	1KP-F8311-00-P2	LEG SHIELD 1	1				UR FOR RSM2
	1KP-F8311-00-P0	LEG SHIELD 1	1				UR FOR RM7
	1KP-F8311-00-P1	LEG SHIELD 1	1				UR FOR WM6
	1KP-F8311-00-P3	LEG SHIELD 1	1				UR FOR BMC
	1KP-F8311-00-P5	LEG SHIELD 1	1				UR FOR LGM6
	1KP-F8311-00-P6	LEG SHIELD 1	1				UR FOR DPRMD
	1KP-F8311-00-P4	LEG SHIELD 1	1				UR FOR DRYM2
2	97707-50016	SCREW, TRUSS HEAD TAPPING	12				
3	90109-06202	BOLT	2				
4	90183-05807	NUT, SPRING	2				
5	1KP-F8312-00	LEG SHIELD 2	1				
6	98907-06012	SCREW, BIND	1				
7	90387-07811	COLLAR	1				
8	1KP-F836K-00	PANEL, INNER 1	1				
9	97707-50016	SCREW, TRUSS HEAD TAPPING	7				
10	1KP-F8385-00	COVER, UNDER	1				
11	90269-06812	RIVET	2				
12	97707-50016	SCREW, TRUSS HEAD TAPPING	2				
13	1KP-F1552-00	FENDER, INNER	1				
14	97707-50016	SCREW, TRUSS HEAD TAPPING	2				
15	90183-05807	NUT, SPRING	2				
16	90520-04809	DAMPER, PLATE	2				
17	1KP-F3391-00-P2	PANEL, FRONT	1				UR FOR RSM2
	1KP-F3391-00-P0	PANEL, FRONT	1				UR FOR RM7
	1KP-F3391-00-P1	PANEL, FRONT	1				UR FOR WM6
	1KP-F3391-00-P3	PANEL, FRONT	1				UR FOR BMC
	1KP-F3391-00-P5	PANEL, FRONT	1				UR FOR LGM6

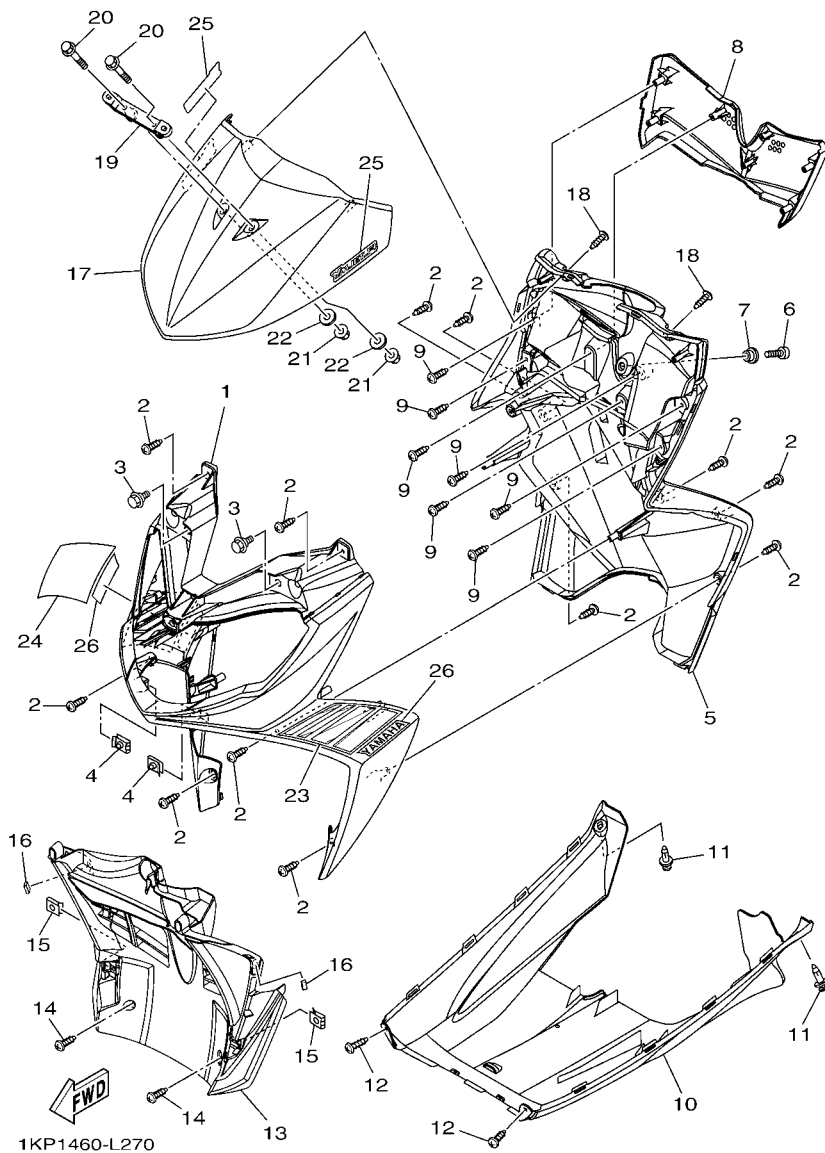


FIG. 27 LEG SHIELD

REF. NO.	PART NO.	DESCRIPTION	1KP1				REMARKS
17	1KP-F3391-00-P6	PANEL, FRONT	1				UR FOR DPRMD
	1KP-F3391-00-P4	PANEL, FRONT	1				UR FOR DRYM2
18	97707-50016	SCREW, TRUSS HEAD TAPPING	2				
19	54P-H454E-00	BRACKET, NUMBER PLATE	1				
20	95802-06030	BOLT, FLANGE	2				
21	95702-06500	NUT, FLANGE	2				
22	90201-06088	WASHER, PLATE	2				
23	1KP-F832B-00	GRAPHIC, 15	1				UR FOR RSM2
	1KP-F832B-10	GRAPHIC, 15	1				UR FOR RM7
	1KP-F832B-20	GRAPHIC, 15	1				UR FOR WM6
	1KP-F832B-30	GRAPHIC, 15	1				UR FOR BMC
	1KP-F832B-40	GRAPHIC, 15	1				UR FOR LGM6
	1KP-F832B-50	GRAPHIC, 15	1				UR FOR DPRMD
	1KP-F832B-60	GRAPHIC, 15	1				UR FOR DRYM2
24	1KP-F832C-00	GRAPHIC, 16	1				UR FOR RSM2
	1KP-F832C-10	GRAPHIC, 16	1				UR FOR RM7
	1KP-F832C-20	GRAPHIC, 16	1				UR FOR WM6
	1KP-F832C-30	GRAPHIC, 16	1				UR FOR BMC
	1KP-F832C-40	GRAPHIC, 16	1				UR FOR LGM6
	1KP-F832C-50	GRAPHIC, 16	1				UR FOR DPRMD
	1KP-F832C-60	GRAPHIC, 16	1				UR FOR DRYM2
25	1KP-F1578-00	EMBLEM	2				UR FOR A,B,D,F
	1KP-F1578-10	EMBLEM	2				UR FOR C,E,G
26	5BP-F153E-20	EMBLEM, YAMAHA	2				UR FOR A,B,D,F
	5BP-F153E-40	EMBLEM, YAMAHA	2				UR FOR C,E,G

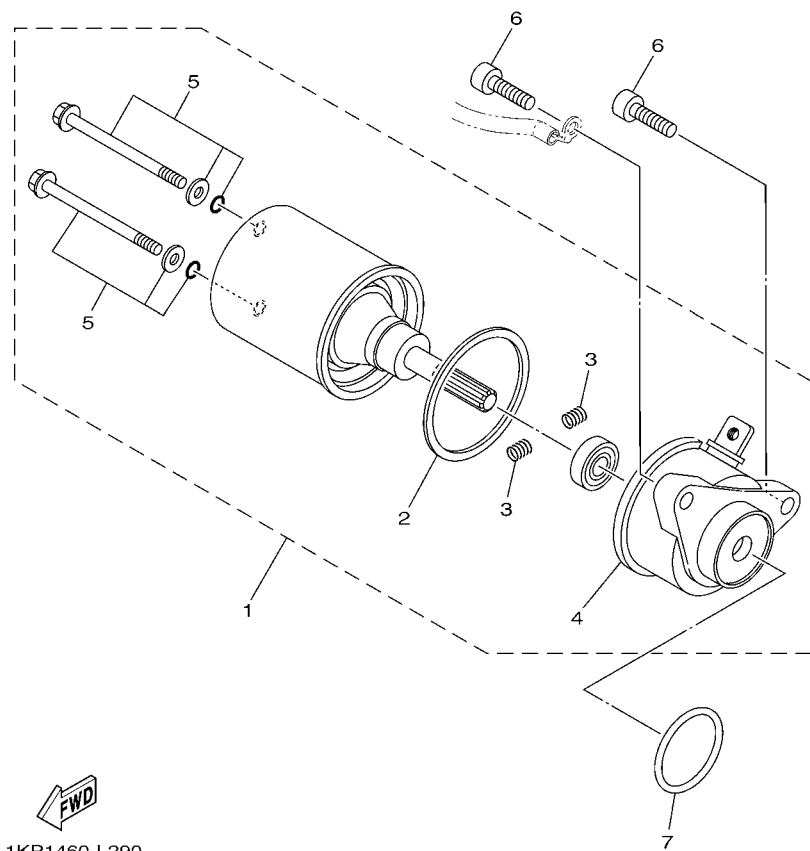
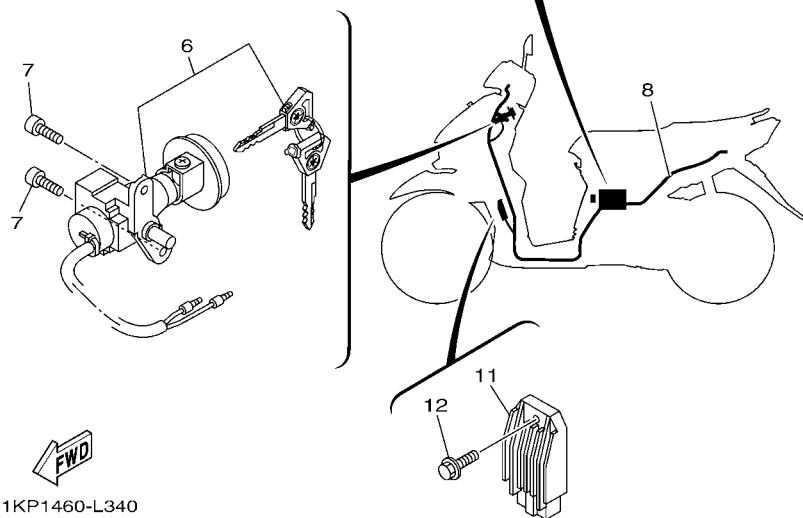


FIG. 29 STARTING MOTOR

[illegible]



REF. NO.	PART NO.	DESCRIPTION	1KP1				REMARKS
1	1KP-H3973-00	SWITCH, HANDLE 3	1				
2	5TL-H3955-20	BRACKET 1	1				
3	97602-05216	SCREW, PAN HEAD WITH WASHER	2				
4	97707-50016	SCREW, TRUSS HEAD TAPPING	1				
5	1KP-H3976-00	SWITCH, HANDLE 1	1				
6	5TL-H2911-20	HOLDER, LEVER 1	1				
7	5TL-H3912-20	LEVER 1	1				
8	90109-06814	BOLT	1				
9	95602-06100	NUT, U	1				
10	5TL-H3980-10	FRONT STOP SWITCH ASSY	1				
11	9870M-03008	SCREW, FLAT HEAD	1				
12	91312-06020	BOLT	1				
13	5TL-H3922-00	LEVER 2	1				
14	90109-06255	BOLT	1				
15	95602-06100	NUT, U	1				
16	54P-H3980-00	FRONT STOP SWITCH ASSY	1				



REF. NO.	PART NO.	DESCRIPTION	1KP1					REMARKS
1	14D-H2100-00	BATTERY ASSY (YUASA YTZ4V)	1					UR
	14D-H2100-10	BATTERY ASSY (GS GZ4V)	1					UR
2	54P-H2115-00	WIRE, PLUS LEAD	1					
3	54P-H2151-00	.FUSE	1					
4	98902-05008	SCREW, BIND	1					
- 5	54P-H2116-00	WIRE, MINUS LEAD	1					
6	1KP-H252E-00	MAIN SWITCH COMP.	1					
7	91312-06014	BOLT	2					
8	1KP-H2590-00	WIRE HARNESS ASSY	1					
9	95022-06012	BOLT, FLANGE	1					
- 10	90464-12810	CLAMP	1					
11	54P-H1960-00	RECTIFIER & REGULATOR ASSY	1					
12	90105-068A0	BOLT, FLANGE	1					
13	5TP-H1940-00	STARTER RELAY ASSY	1					
- - - - -								
- - - - -								
- - - - -								
- - - - -								

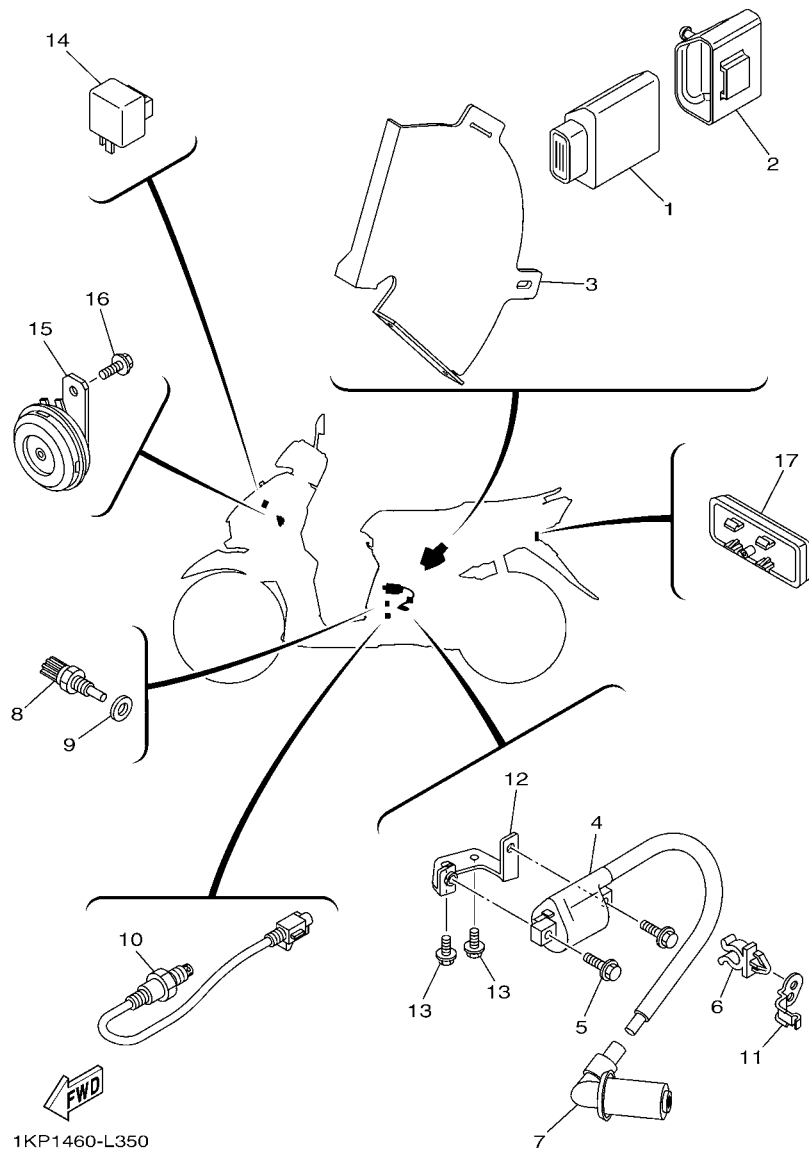


FIG. 35 ELECTRICAL 2

REF. NO.	PART NO.	DESCRIPTION	1KPI				REMARKS
1	54P-H591A-00	ENGINE CONTROL UNIT ASSY	1				
2	54P-H5546-00	BAND	1				
3	1KP-H2599-00	COVER, CONNECTER	1				
4	54P-H2310-00	IGNITION COIL ASSY	1				
5	95022-06020	BOLT, FLANGE	2				
6	90464-14808	CLAMP	1				
7	54P-H2370-00	PLUG CAP ASSY	1				
8	54P-H3591-00	THERMO UNIT	1				
9	90430-10804	GASKET	1				
10	54P-H592A-00	SENSOR, OXYGEN	1				
11	54P-H1328-00	CLAMP	1				
12	1KP-H2316-00	BRACKET, IGNITION COIL	1				
13	95022-06010	BOLT, FLANGE	2				
14	5D9-H3350-00	FLASHER RELAY ASSY	1				
15	54P-H3371-00	HORN	1				
16	95802-06010	BOLT, FLANGE	1				
17	54P-H5130-00	REAR REFLECTOR ASSY	1				

NUMERICAL INDEX

PART NO.	REF. NO.	PART NO.	REF. NO.	PART NO.	REF. NO.	PART NO.	REF. NO.	PART NO.	REF. NO.	PART NO.	REF. NO.
5LW-15659-01	10 - 6	54P-E262H-00	6 - 4	54P-E5150-00	9 - 1	54P-E7623-00	12 - 9	1KP-F171E-00-P5	16 - 31	28D-F3110-00	18 - 8
18G-23411-00	18 - 17	54P-E2651-00	6 - 1	54P-E5191-00	10 - 7	54P-E7632-00	12 - 8	1KP-F171E-00-P6	16 - 31	28D-F3111-00	18 - 19
5TL-2341E-00	18 - 25	54P-E2652-00	6 - 3	54P-E5316-00	10 - 11	54P-E7641-00	12 - 26	1KP-F171L-00-7B	16 - 6	54P-F3126-00	18 - 5
5TL-2341E-10	18 - 28	54P-E2658-00	6 - 2	54P-E5351-00	5 - 4	44D-E7645-00	12 - 27	1KP-F171M-00-7B	16 - 10	54P-F3136-00	18 - 2
36Y-2589H-00	25 - 8	54P-E2659-00	6 - 9	54P-E5362-00	9 - 21	54P-E7649-00	12 - 33	1KP-F1721-00-P0	16 - 19	28D-F3141-00	18 - 15
1Y7-83517-00	30 - 5	44D-E2662-00	3 - 11	5LW-E5363-00	9 - 18	54P-E7653-00	12 - 10	1KP-F1721-00-P1	16 - 19	5LM-F3144-00	18 - 14
54P-E1102-00	1 - 1	54P-E2668-00	6 - 10	54P-E5371-00	9 - 7	54P-E7660-00	12 - 14	1KP-F1721-00-P2	16 - 19	3AY-F3145-00	18 - 3
54P-E111F-00	4 - 3	54P-E2684-00	6 - 5		10 - 3	5TL-E7664-00	12 - 18	1KP-F1721-00-P3	16 - 19		18 - 6
54P-E111J-00	1 - 7	1KP-E3300-00	5 - 1	54P-E5373-00	9 - 8	44D-E7668-00	12 - 21	1KP-F1721-00-P4	16 - 19	2JG-F3147-00	18 - 20
54P-E1133-10	1 - 2	5TL-E3324-00	2 - 8	54P-E5383-00	10 - 9	54P-E7670-00	12 - 15	1KP-F1721-00-P5	16 - 19	5D9-F3152-00	18 - 11
54P-E1162-00	1 - 22	54P-E3411-00	5 - 5	54P-E5407-00	10 - 22	54P-E7674-00	12 - 11	1KP-F1721-00-P6	16 - 19	5P0-F3153-00	18 - 23
54P-E1165-00	1 - 9	5LW-E3452-00	2 - 6	14D-E5408-00	9 - 9	54P-E7678-00	12 - 24	1KP-F172W-00	16 - 1	5P0-F3156-00	18 - 4
54P-E1166-00	7 - 39	54P-E3474-00	7 - 16	54P-E5408-00	10 - 17	54P-E7678-10	12 - 22	1KP-F1731-00-7B	16 - 25		18 - 7
54P-E1169-00	1 - 10	5LW-E3475-00	5 - 2	54P-E5411-00	10 - 1	54P-E7683-00	12 - 19	1KP-F1735-00	14 - 3	2JG-F3157-00	18 - 10
54P-E1173-00	1 - 13	54P-E3556-00	7 - 3	54P-E5413-00	10 - 25	54P-E7684-00	12 - 20	1KP-F173E-00	16 - 35	509-F3158-L0	18 - 12
54P-E1181-00	1 - 17	54P-E3557-00	7 - 14	54P-E5417-00	9 - 23	1KP-F1110-00	14 - 1	1KP-F173E-10	16 - 35	4D0-F3165-00	18 - 22
54P-E1191-00	1 - 8	5LW-E3569-00	6 - 16	54P-E5421-00	9 - 36	54P-F1161-00	18 - 35	1KP-F173E-20	16 - 35	28D-F3170-00	18 - 9
54P-E1193-00	1 - 14	54P-E3575-00	7 - 37	54P-E5423-00	9 - 30	54P-F1268-00	14 - 2	1KP-F173E-30	16 - 35	278-F3181-50	18 - 13
4YS-E1198-00	9 - 15	54P-E3585-00	7 - 1	54P-E5451-00	10 - 2	54P-F1410-00	14 - 4	1KP-F173E-40	16 - 35	28D-F3340-00	18 - 16
54P-E1311-00	1 - 21	54P-E3593-00	7 - 5	54P-E5453-00	9 - 26	54P-F1459-00	14 - 11	1KP-F173E-50	16 - 35	4D0-F3346-00	18 - 18
54P-E1351-00	1 - 23	54P-E3595-00	7 - 2	54P-E5461-00	9 - 37	1KP-F1511-00-P0	15 - 1	1KP-F173E-60	16 - 35	54P-F334G-00	18 - 21
1KP-E1400-00	2 - 1	54P-E3750-01	7 - 17	54P-E5471-00	10 - 18	1KP-F1511-00-P1	15 - 1	1KP-F173F-00	16 - 36	1KP-F3391-00-P0	27 - 17
1KP-E1422-00	2 - 5	54P-E3761-00	7 - 9	54P-E5472-00	10 - 20	1KP-F1511-00-P2	15 - 1	1KP-F173F-10	16 - 36	1KP-F3391-00-P1	27 - 17
54P-E1445-00	2 - 14	5LW-E3769-00	9 - 22	54P-E5473-00	10 - 16	1KP-F1511-00-P3	15 - 1	1KP-F173F-20	16 - 36	1KP-F3391-00-P2	27 - 17
54P-E1603-00	2 - 13	54P-E3770-00	7 - 8	54P-E5495-00	10 - 21	1KP-F1511-00-P4	15 - 1	1KP-F173F-30	16 - 36	1KP-F3391-00-P3	27 - 17
54P-E1631-00	2 - 10	54P-E3815-00	7 - 20	54P-E5512-00	11 - 6	1KP-F1511-00-P5	15 - 1	1KP-F173F-40	16 - 36	1KP-F3391-00-P4	27 - 17
54P-E1633-00	2 - 11	54P-E3892-00	7 - 18	44D-E5521-00	11 - 7	1KP-F1511-00-P6	15 - 1	1KP-F173F-50	16 - 36	1KP-F3391-00-P5	27 - 17
5D9-E1651-00	2 - 4	54P-E3895-00	7 - 19	54P-E5524-00	11 - 1	5BP-F153E-20	27 - 26	1KP-F173F-60	16 - 36	1KP-F3391-00-P6	27 - 17
5MX-E1681-10	2 - 2	54P-E3907-10	19 - 6	1KP-E5570-00	11 - 4	5BP-F153E-40	27 - 26	1KP-F1741-00-7B	16 - 28	54P-F3411-00	18 - 27
54P-E2111-00	3 - 1	54P-E3938-00	7 - 12	44D-E5598-00	11 - 5	1KP-F1552-00	27 - 13	1KP-F1746-00	16 - 3	28D-F3412-00	18 - 24
54P-E2113-00	3 - 4	54P-E3971-00	19 - 3	5TL-E5601-10	11 - 8	1KP-F1578-00	27 - 25	1KP-F174G-00	16 - 37	54P-F3412-00	18 - 26
1KP-E2117-00	3 - 6	54P-E4137-00	7 - 13	1KP-E5620-00	11 - 14	1KP-F1578-10	27 - 25	1KP-F174G-10	16 - 37	5TL-F3416-00	18 - 29
5TL-E2118-00	3 - 5	54P-E4146-00	7 - 23	4VP-E5630-00	11 - 16	1KP-F157B-00	16 - 39	1KP-F174G-20	16 - 37	54P-F4110-00	19 - 1
54P-E2119-00	3 - 3	54P-E4147-00	7 - 10	5MX-E5657-00	12 - 30	1KP-F157C-00	16 - 40	1KP-F174G-30	16 - 37	1KP-F414A-00	19 - 10
54P-E2121-00	3 - 2	5CA-E4147-00	7 - 11	5MX-E5673-00	11 - 17	1KP-F1611-00	15 - 3	1KP-F174G-40	16 - 37	54P-F414G-00	19 - 7
5P0-E2126-00	3 - 7	54P-E4411-00	7 - 24	44D-E5744-00	12 - 23	1KP-F1621-00	15 - 5	1KP-F174G-50	16 - 37	1KP-F416B-00	16 - 41
54P-E2146-00	3 - 12	54P-E4412-00	7 - 25	54P-E6111-00	12 - 1	1KP-F1711-00-P0	16 - 14	1KP-F174G-60	16 - 37	1KP-F417B-00	16 - 42
54P-E2151-00	3 - 8	54P-E442F-00	7 - 42	54P-E6611-00	12 - 25	1KP-F1711-00-P1	16 - 14	1KP-F174H-00	16 - 38	54P-F419F-00	19 - 4
33S-E2159-00	3 - 10	54P-E4437-00	7 - 26	54P-E6620-00	12 - 13	1KP-F1711-00-P2	16 - 14	1KP-F174H-10	16 - 38	54P-F4491-00	19 - 8
54P-E2170-00	4 - 1	28D-E443E-00	7 - 33	54P-E7155-00	13 - 8	1KP-F1711-00-P3	16 - 14	1KP-F174H-20	16 - 38	4YY-F4610-00	19 - 11
44D-E2176-00	4 - 5	4ST-E443E-00	10 - 4	54P-E7211-00	13 - 5	1KP-F1711-00-P4	16 - 14	1KP-F174H-30	16 - 38	4YY-F4612-00	19 - 12
5MX-E2210-10	4 - 11	5TP-E443G-00	7 - 30	54P-E7410-00	13 - 1	1KP-F1711-00-P5	16 - 14	1KP-F174H-40	16 - 38	1KP-F4704-00	20 - 5
54P-E2213-00	4 - 12	54P-E4452-00	7 - 29	54P-E7421-00	13 - 4	1KP-F1711-00-P6	16 - 14	1KP-F174H-50	16 - 38	1KP-F470F-00	20 - 2
54P-E2228-00	4 - 14	54P-E4453-00	7 - 28	54P-E7465-00	12 - 16	1KP-F171E-00-P0	16 - 31	1KP-F174H-60	16 - 38	54P-F4726-00	20 - 11
54P-E2231-00	4 - 7	54P-E4610-00	8 - 1	54P-E7465-10	12 - 17	1KP-F171E-00-P1	16 - 31	54P-F2141-00	14 - 13	5TL-F4727-00	20 - 10
44D-E2233-00	4 - 8	14D-E4613-00	8 - 5	54P-E7471-00	12 - 2	1KP-F171E-00-P2	16 - 31	54P-F2210-00	17 - 1	1KP-F4730-00	20 - 1
54P-E2241-00	4 - 10	54P-E4718-00	8 - 2	54P-E7611-00	12 - 12	1KP-F171E-00-P3	16 - 31	5MX-F2216-00	9 - 5	3C1-F4741-00	20 - 4
54P-E2611-00	6 - 13	54P-E5113-00	9 - 20	54P-E7620-00	12 - 7	1KP-F171E-00-P4	16 - 31	54P-F3100-00	18 - 1	5D9-F4741-00	20 - 3

NUMERICAL INDEX

PART NO.	REF. NO.	PART NO.	REF. NO.	PART NO.	REF. NO.	PART NO.	REF. NO.	PART NO.	REF. NO.	PART NO.	REF. NO.
1S7-F4768-00	20 - 15	1KP-F6145-00	24 - 7	1KP-F832C-50	27 - 24	54P-H3980-00	33 - 16	90170-05803	3 - 9	90387-06891	7 - 34
1KP-F476U-00	20 - 25	44D-F6240-00	24 - 10	1KP-F832C-60	27 - 24	5TL-H3980-10	33 - 10	90170-12800	12 - 32	90387-07811	27 - 7
1KP-F4773-00-P0	20 - 19	44D-F6241-00	24 - 11	1KP-F8356-00	14 - 15	2B5-H411V-00	31 - 6	90175-06013	24 - 24	90387-08820	26 - 14
1KP-F4773-00-P1	20 - 19	54P-F6246-00	24 - 12	1KP-F836K-00	27 - 8	1KP-H4127-00	31 - 9	90179-08518	1 - 15	90387-08821	14 - 8
1KP-F4773-00-P2	20 - 19	2P2-F6280-11	24 - 13	5LM-F8371-00	32 - 7	1KP-H4192-00	31 - 8	90179-10803	12 - 35	90387-10837	21 - 7
1KP-F4773-00-P3	20 - 19	44D-F6281-00	24 - 26	1UB-F8372-00	16 - 33	1KP-H4300-00	31 - 1	90179-12004	28 - 7	90388-10800	14 - 12
1KP-F4773-00-P4	20 - 19	44D-F6282-00	24 - 27	1KP-F8385-00	27 - 10	1KP-H430A-00	31 - 7	90179-25002	18 - 30	90388-10805	9 - 6
1KP-F4773-00-P5	20 - 19	2P2-F6290-11	24 - 14	54P-H1328-00	35 - 11	1KP-H4312-00	31 - 5	90183-05807	16 - 9	90401-10812	25 - 2
1KP-F4773-00-P6	20 - 19	54P-F6301-10	24 - 15	54P-H132G-00	28 - 5	5HV-H4314-00	31 - 2		16 - 13	90430-06014	1 - 5
40D-F4780-01	20 - 13	54P-F6351-00	24 - 18	54P-H1410-00	28 - 2	54P-H454E-00	27 - 19		16 - 18	90430-08119	9 - 3
1KP-F478E-00	20 - 16	54P-F637G-00	24 - 19	54P-H1450-00	28 - 1	1KP-H4710-00	32 - 1		16 - 24		9 - 17
54P-F5168-00-33	21 - 1	54P-F7111-00	26 - 1	1KP-H1617-00	29 - 3	4AC-H4714-00	32 - 2		16 - 27	90430-10804	35 - 9
3AY-F5181-01	21 - 8	54P-F7112-00	26 - 2	1KP-H1828-00	29 - 5	1KP-H4735-00	32 - 4		16 - 30	90464-12810	34 - 10
54P-F518A-00	22 - 3	44D-F7114-00	14 - 7	1KP-H1830-00	29 - 4	54P-H5130-00	35 - 17		20 - 7	90464-14808	35 - 6
5TL-F5190-01	21 - 11	4YY-F7114-00	26 - 17	1KP-H1847-00	29 - 2	54P-H5546-00	35 - 2		24 - 5	90467-110A3	10 - 5
5MX-F530K-00	23 - 7	54P-F7114-00	24 - 20	1KP-H1890-00	29 - 1	54P-H591A-00	35 - 1		24 - 8	90467-12807	7 - 31
54P-F5326-00	23 - 4	54P-F7121-00	9 - 4	5TP-H1940-00	34 - 13	54P-H592A-00	35 - 10		26 - 9	90467-13858	7 - 40
54P-F5338-00-33	23 - 1	5LW-F7254-00	26 - 5	54P-H1960-00	34 - 11	5P0-W0041-00	25 - 5		27 - 4		7 - 41
5MX-F533A-00	23 - 12	54P-F7267-00	26 - 6	14D-H2100-00	34 - 1	4C9-W0048-00	22 - 9		27 - 15	90467-15804	7 - 21
5MX-F5351-00	23 - 10	54P-F7311-00	26 - 12	14D-H2100-10	34 - 1	54P-WE445-00	7 - 27		32 - 6		7 - 22
5LW-F5355-00	23 - 11	54P-F7430-00	26 - 18	54P-H2115-00	34 - 2	90101-06046	23 - 14	90185-10811	21 - 9	90480-13013	7 - 36
5P0-F5802-00	22 - 5	54P-F7431-00	26 - 19	54P-H2116-00	34 - 5	90101-08847	26 - 13	90185-10815	24 - 3	90501-12743	26 - 21
5YP-F5803-50	22 - 6	54P-F7432-00	26 - 20	54P-H2129-00	20 - 8	90105-068A0	34 - 12	90185-14814	23 - 15		26 - 29
3C1-F5805-10	22 - 10	54P-F7440-00	26 - 26	54P-H2151-00	34 - 3	90105-068A5	7 - 6	90201-05817	8 - 4	90501-16003	24 - 23
54P-F580U-00	22 - 4	54P-F7441-00	26 - 27	1KP-H2176-00	20 - 22	90105-068A6	7 - 7	90201-06088	27 - 22	90501-16004	5 - 6
1KP-F582U-00	22 - 1	54P-F7442-00	26 - 28	54P-H2310-00	35 - 4	90105-08861	17 - 2	90201-10065	17 - 5	90506-12001	23 - 8
5P0-F583T-03	25 - 4	1KP-F7481-00	26 - 7	1KP-H2316-00	35 - 12	90105-088E1	4 - 4	90201-10118	25 - 3	90506-15001	23 - 9
5P0-F5852-00	25 - 7	54P-F8100-00	20 - 26	54P-H2370-00	35 - 7	90105-088E3	14 - 9	90201-10831	21 - 10	90506-20514	26 - 16
5P0-F5854-00	25 - 6	1KP-F8311-00-P0	27 - 1	1KP-H252E-00	34 - 6	90105-10036	24 - 2	90201-12028	17 - 4	90506-35821	26 - 4
5P0-F5855-00	25 - 10	1KP-F8311-00-P1	27 - 1	1KP-H2590-00	34 - 8	90105-10283	14 - 5	90201-12688	28 - 6	90508-32768	11 - 9
5TL-F5867-01	25 - 9	1KP-F8311-00-P2	27 - 1	1KP-H2599-00	35 - 3	90109-06202	15 - 2	90201-14820	23 - 16	90520-02819	16 - 4
1KP-F5872-00	25 - 1	1KP-F8311-00-P3	27 - 1	5TL-H2911-20	33 - 6		15 - 4	90201-154E8	11 - 11		16 - 7
1KP-F5875-00	18 - 31	1KP-F8311-00-P4	27 - 1	5HV-H3311-00	31 - 3		20 - 6	90201-15841	12 - 29		16 - 34
28D-F5876-00	18 - 33	1KP-F8311-00-P5	27 - 1		32 - 3		27 - 3	90201-20276	23 - 17	90520-03806	20 - 21
5YP-F5917-00	22 - 7	1KP-F8311-00-P6	27 - 1	5D9-H3350-00	35 - 14	90109-06255	33 - 14	90206-14093	23 - 13	90520-03808	20 - 24
5P0-F5919-00	22 - 12	1KP-F8312-00	27 - 5	54P-H3371-00	35 - 15	90109-06814	33 - 8	90208-12808	12 - 31	90520-03809	20 - 23
5YP-F5924-00	22 - 13	1KP-F832B-00	27 - 23	1KP-H3509-00	30 - 4	90110-06862	1 - 20	90249-12008	24 - 25	90520-04809	27 - 16
5YP-F5925-01	22 - 11	1KP-F832B-10	27 - 23	1KP-H3510-00	30 - 1	90111-06811	8 - 3	90269-06812	16 - 17	90520-05810	6 - 8
5YP-F5937-00	22 - 8	1KP-F832B-20	27 - 23	1KP-H3511-00	30 - 2	90111-08815	22 - 2		16 - 23	90520-05812	16 - 20
5YP-F5939-00	22 - 14	1KP-F832B-30	27 - 23	2P0-H3516-00	31 - 4	90116-08843	9 - 13		26 - 11	90520-06804	31 - 10
54P-F6110-00	24 - 1	1KP-F832B-40	27 - 23	54P-H3550-10	30 - 8	90119-06044	19 - 2		27 - 11	90520-08802	26 - 8
1KP-F6143-00-P0	24 - 4	1KP-F832B-50	27 - 23	1KP-H3572-00	30 - 3		26 - 10	90280-03017	2 - 9	90520-08804	16 - 2
1KP-F6143-00-P1	24 - 4	1KP-F832B-60	27 - 23	54P-H3591-00	35 - 8	90149-05801	1 - 11	90340-12808	9 - 14		16 - 11
1KP-F6143-00-P2	24 - 4	1KP-F832C-00	27 - 24	5TL-H3912-20	33 - 7	90149-10804	22 - 15	90380-15811	11 - 10	90520-10811	10 - 19
1KP-F6143-00-P3	24 - 4	1KP-F832C-10	27 - 24	5TL-H3922-00	33 - 13	90151-06811	10 - 10	90387-05820	16 - 15	90520-15806	10 - 26
1KP-F6143-00-P4	24 - 4	1KP-F832C-20	27 - 24	5TL-H3955-20	33 - 2	90159-03102	30 - 6		16 - 21	90560-10292	21 - 2
1KP-F6143-00-P5	24 - 4	1KP-F832C-30	27 - 24	1KP-H3973-00	33 - 1	90159-06810	16 - 32	90387-064W3	7 - 35	91312-05010	19 - 9
1KP-F6143-00-P6	24 - 4	1KP-F832C-40	27 - 24	1KP-H3976-00	33 - 5	90163-05803	7 - 32	90387-067V1	6 - 7	91312-06010	12 - 3

NUMERICAL INDEX

PART NO.	REF. NO.	PART NO.	REF. NO.	PART NO.	REF. NO.	PART NO.	REF. NO.	PART NO.	REF. NO.	PART NO.	REF. NO.
91312-06012	4 - 9	93440-10085	1 - 3	95802-06010	18 - 36	99480-05010	9 - 27				
91312-06014	34 - 7	93450-14088	2 - 12		20 - 17						
91312-06020	28 - 3	93450-32837	11 - 3		35 - 16						
	29 - 6	93501-04843	26 - 22	95802-06030	27 - 20						
	33 - 12		26 - 30	95802-08030	26 - 25						
91312-06025	11 - 15	94107-14802	21 - 5		26 - 33						
	25 - 11	94108-14802	23 - 2	95812-06025	7 - 15						
91401-25015	26 - 24	94207-14802	21 - 6		7 - 38						
	26 - 32	94208-14802	23 - 3	95812-06030	1 - 12						
91701-08035	26 - 23	94568-F9090	4 - 6	95812-08016	9 - 16						
	26 - 31	94700-00880	1 - 16	95812-08045	8 - 7						
91810-14809	1 - 18	94700-00895	1 - 16	95822-06016	6 - 15						
	1 - 19	95022-06010	1 - 4	95822-06020	10 - 24						
	9 - 10		10 - 8		20 - 20						
	9 - 33		19 - 5	95822-06090	10 - 23						
	9 - 38		20 - 14	97602-05216	33 - 3						
	10 - 12		35 - 13	97602-06220	6 - 11						
92012-05010	24 - 17	95022-06012	34 - 9	97702-40616	32 - 5						
92012-05016	24 - 16	95022-06014	24 - 22	97702-60530	6 - 12						
92902-10200	22 - 16	95022-06016	9 - 29	97707-50012	16 - 26						
93102-15801	11 - 13	95022-06020	4 - 13		16 - 29						
93102-17803	12 - 6		35 - 5		20 - 9						
93102-19817	9 - 24	95022-06025	9 - 34	97707-50016	16 - 5						
93102-25819	9 - 31	95022-06035	9 - 35		16 - 8						
93102-26811	13 - 7		9 - 39		16 - 12						
93106-20816	21 - 3		10 - 13		16 - 16						
93210-07802	23 - 6	95022-06040	24 - 21		16 - 22						
93210-148H8	9 - 19	95022-06045	10 - 14		24 - 6						
93210-16805	12 - 28	95022-06060	9 - 11		24 - 9						
93210-258G2	12 - 34	95022-06070	9 - 12		27 - 2						
93210-29800	5 - 7		9 - 28		27 - 9						
93210-29803	29 - 7	95022-06080	10 - 15		27 - 12						
93210-30611	7 - 4	95022-08012	9 - 2		27 - 14						
93210-94800	6 - 14	95302-10600	17 - 3		27 - 18						
93211-07800	9 - 25	95602-06100	33 - 9		30 - 7						
93211-37803	9 - 32		33 - 15		31 - 11						
93306-002YS	4 - 2	95602-08200	14 - 10		33 - 4						
93306-006Y5	12 - 36		26 - 15	97707-50020	6 - 6						
93306-054X9	13 - 6	95602-10200	14 - 6	98502-05020	5 - 3						
93306-253Y9	12 - 5		14 - 14	98502-05025	24 - 28						
	13 - 9	95612-08618	1 - 6	98502-06016	28 - 4						
93306-300YK	21 - 4	95702-06500	20 - 12	98507-05010	20 - 18						
93306-301XT	13 - 2		27 - 21	9870M-03008	33 - 11						
	13 - 3	95702-08500	8 - 6	98902-05008	34 - 4						
93306-372Y5	2 - 7	95702-10500	23 - 5	98907-06012	27 - 6						
93306-804Y3	11 - 2	95802-06010	14 - 16	99002-08600	26 - 3						
93306-804Y4	11 - 2		18 - 32	99009-15400	11 - 12						
93310-528Y8	2 - 3		18 - 34	99009-17400	12 - 4						